

ORDINANCE NO.: 2005-006

*Closing a Portion of the Right-of-Way for Drayton Street;
Richland County TMS #09109; North Main Street Streetscape Project; CF #250-169*

WHEREAS, the design for the North Main Street Streetscape Project includes closing the portion of Drayton Street from Anthony Street to the intersection with North Main Street (US 21) as shown on the attached North Main Street Streetscape Project, SCDOT File No. 40.640A, Sheet #11; and,

WHEREAS, the area of Drayton Street to be closed shall remain under the ownership of the City of Columbia, but will no longer be utilized for traffic flow upon completion of the North Main Street Streetscape improvements; and,

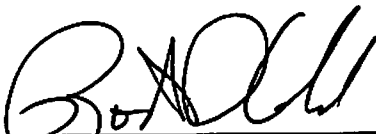
WHEREAS, the City of Columbia's Street Division and Traffic Engineering have approved the request; and

WHEREAS, the City of Columbia's Department of Facilities and Construction Management has reviewed and approved the plans; NOW THEREFORE

BE IT ORDAINED by the Mayor and City Council of the City of Columbia, South Carolina this 19th day of January 2005 that the portion of the right-of-way for Drayton Street shown on the North Main Street Streetscape Project, SCDOT File No. 40.640A, Sheet #11 shall be closed for use by the general public. A copy of the said North Main Street Streetscape Project, SCDOT File No. 40.640A, Sheet#11 being on file in the Department of Utilities and Engineering under file reference #250-169 and being incorporated herein and made a part hereof as Exhibit "A". The closing of this right-of-way shall not extinguish any utility easements of record with regard to the portion of the right-of-way, if any. The City of Columbia reserves its right, as well as the rights of other utility providers, to access for maintenance and repair of any utilities located within that portion of the right-of-way being closed.

Requested by:

Department of Utilities & Engineering



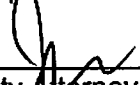
Mayor

Approved by:




City Manager

Approved as to form:



City Attorney

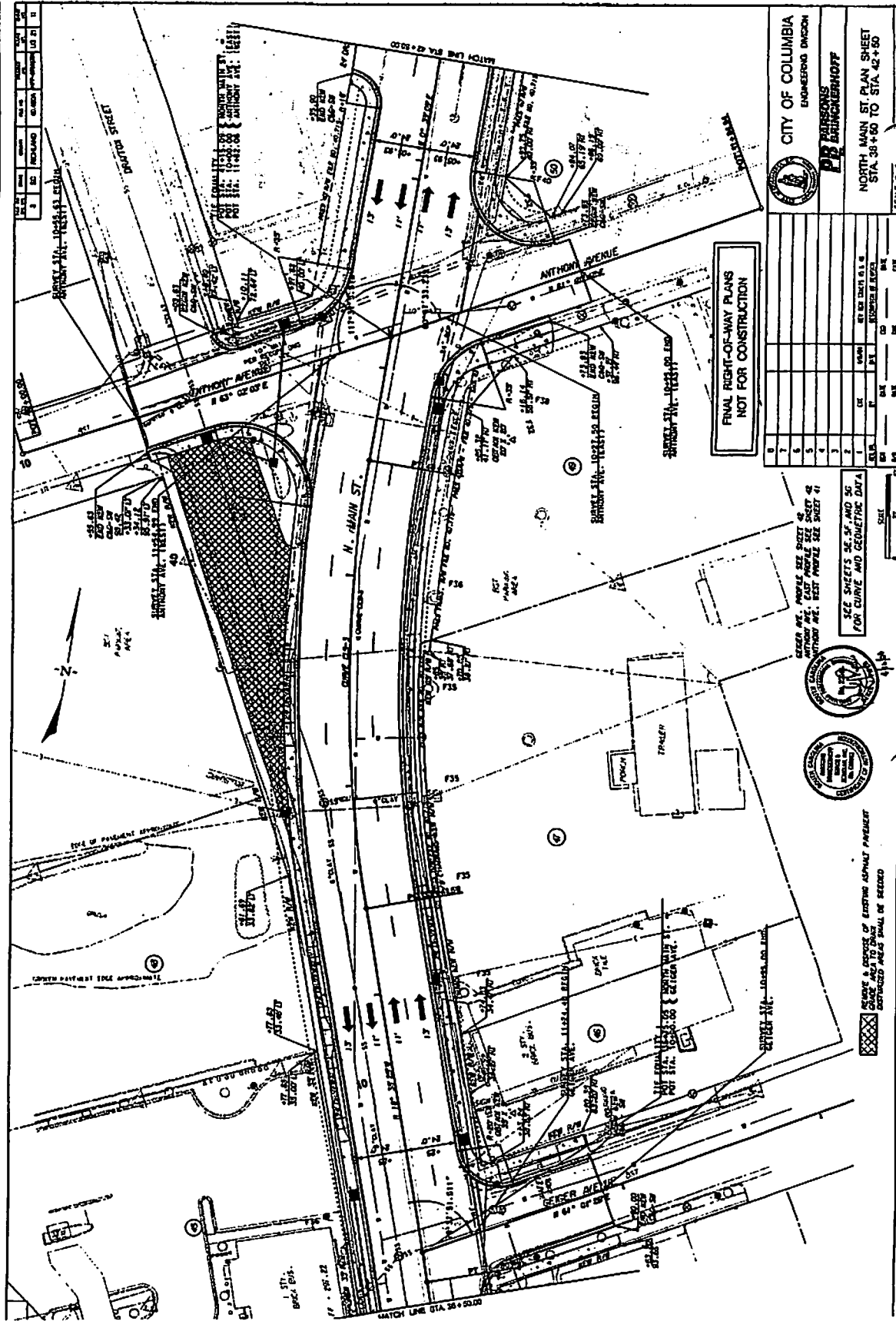
ATTEST:



City Clerk

Introduced 1/12/2005
Final Reading 1/19/2005

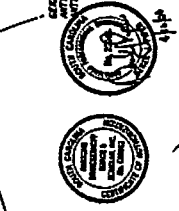
ORIGINAL
STAMPED IN REC



CITY OF COLUMBIA
 ENGINEERING DIVISION
 P. BRUNCKENHOFF

1	2	3	4	5	6	7	8

SEE SHEETS 42-54 AND 50
 FOR CURVE AND GEOMETRIC DATA



CHANGES & DEVIATIONS OF EXISTING ASPHALT PAVEMENT
 INDICATED BY HATCHED AREA SHALL BE RECORDED

FINAL RIGHT-OF-WAY PLANS
 NOT FOR CONSTRUCTION

NORTH MAIN ST. PLAN SHEET
 STA. 38+00 TO STA. 42+50
 SHEET NO. 1