

**ORDINANCE NO.: 2010-029**

ORIGINAL  
STAMPED IN RED

*Granting an encroachment to the Historic Waverly Improvement and Protection Association for installation and maintenance of landscaping and irrigation within the right of way areas of 2214 Washington Street; 2214 Hampton Street; North side of the 2300 block Hampton Street; NE corner of Heidt Street and Gervais Street; NE corner of Pine Street and Gervais Street; SE corner of Lady Street and Heidt Street; NE corner of Oak Street and Gervais Street; NW corner of Hampton Street and North Millwood Avenue; NW corner of Oak Street and Washington Street; NE corner of Oak Street and Washington Street; SE corner of Washington Street and Oak Street; SW corner of Washington Street and Oak Street; NW corner of Lady Street at Pine Street; SW corner of Lady Street and Pine Street; SE corner of Lady Street and Pine Street; NE corner of Lady Street and Pine Street; SE corner of Taylor Street and Oak Street; 1421 Oak Street; SE corner of Hampton Street and Oak Street; and, SE corner of Hampton Street and Harden Street*

WHEREAS, the Historic Waverly Improvement and Protection Association (hereinafter "Grantee") desires to utilize a portion of the right of way area of 2214 Washington Street; 2214 Hampton Street; North side of the block of 2300 Hampton Street; NE corner of Heidt Street and Gervais Street; NE corner of Pine Street and Gervais Street; SE corner of Lady Street and Heidt Street; NE corner of Oak Street and Gervais Street; NW corner of Hampton Street and North Millwood Avenue; NW corner of Oak Street and Washington Street; NE corner of Oak Street and Washington Street; SE corner of Washington Street and Oak Street; SW corner of Washington Street and Oak Street; NW corner of Lady Street at Pine Street; SW corner of Lady Street and Pine Street; SE corner of Lady Street and Pine Street; NE corner of Lady Street and Pine Street; SE corner of Taylor Street and Oak Street; 1421 Oak Street; SE corner of Hampton Street and Oak Street; and, SE corner of Hampton Street and Harden Street, for installation and maintenance of landscaping as shown on the attached drawings; and,

WHEREAS, it appears that the encroachment will not interfere with the use of the sidewalk or street for traffic, utility locations or other uses within the foreseeable future; NOW, THEREFORE,

BE IT ORDAINED by the Mayor and City Council of the City of Columbia, South Carolina, this 7th day of April, 2010, that Grantee, its successors and assigns, is hereby granted the right to utilize a portion of the right of way area of 2214 Washington Street; 2214 Hampton Street; North side of the block of 2300 Hampton Street; NE corner of Heidt Street and Gervais Street; NE corner of Pine Street and Gervais Street; SE corner of Lady Street and Heidt Street; NE corner of Oak Street and Gervais Street; NW corner of Hampton Street and North Millwood Avenue; NW corner of Oak Street and Washington Street; NE corner of Oak Street and Washington Street; SE corner of Washington Street and Oak Street; SW corner of Washington Street and Oak Street; NW corner of Lady Street at Pine Street; SW corner of Lady Street and Pine Street; SE corner of Lady Street and Pine Street; NE corner of Lady Street and Pine Street; SE corner of Taylor Street and Oak Street; 1421 Oak Street; SE corner of Hampton Street and Oak Street; and, SE corner of Hampton Street and Harden Street, for installation and maintenance of landscaping as shown on the attached drawing, for installation and maintenance of landscaping as shown on the attached drawings.

ALL WORK SHALL COMPLY with the requirements of The City of Columbia and South Carolina Department of Transportation now in existence or hereafter enacted. The materials and type of finish to be used are to be approved by the City Engineer prior to installation. Any damage to the street or sidewalk caused by construction or maintenance shall be repaired to the satisfaction of the City Manager.



ORIGINAL  
STAMPED IN RED

Improvements constructed within the encroachment by or on behalf of Grantee shall be maintained by the Grantee at no cost to the City in a manner approved by the City Manager.

PROVIDED, HOWEVER, that in exercising the privileges granted under this ordinance, Grantee, its successors and assigns, will indemnify and save harmless the City from any and all claims or causes of action which may arise by reason of the construction or maintenance of the aforesaid encroachment.

PROVIDED FURTHER that the privilege granted hereby is subject to the Grantee complying with the following conditions, restrictions or limitations:

1. No item, including landscaping, shall be placed, planted or allowed to grow such that it creates a visual impediment to persons safely entering or exiting the driveway or to persons safely walking along the sidewalk.
2. The City reserves the right to remove or cut any item located within the right of way which it deems to be a safety hazard.
3. Irrigation must be designed to avoid spraying walkways, sidewalks and streets and/or creating hazardous conditions upon the walkways, sidewalks and streets;

PROVIDED FURTHER that the privilege granted hereby may be modified or terminated by Columbia City Council at any time without notice to the Grantee, its successors and assigns.

PROVIDED FURTHER that a certificate of insurance be issued as evidence of general liability insurance with at least the minimum amount of \$600,000.00 for personal injury and property damage and naming the City as an insured, be provided to and filed annually with the City Clerk by Grantee, its successors and assigns, as required by Chapter 11, Licenses, Permits, Business Regulations, Article III, Contractors, Sec. 11-71, 1998 Code of Ordinances of the City of Columbia, South Carolina.

BE IT FURTHER ORDAINED that Grantee, in consideration of the above privilege, shall at its expense provide for protection and, if necessary, relocation of all utilities that might be within this area to the satisfaction of the City Manager.

Requested by:

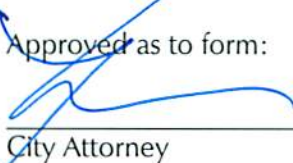
Historic Waverly Improvement and  
Protection Association


  
MAYOR

Approved by:

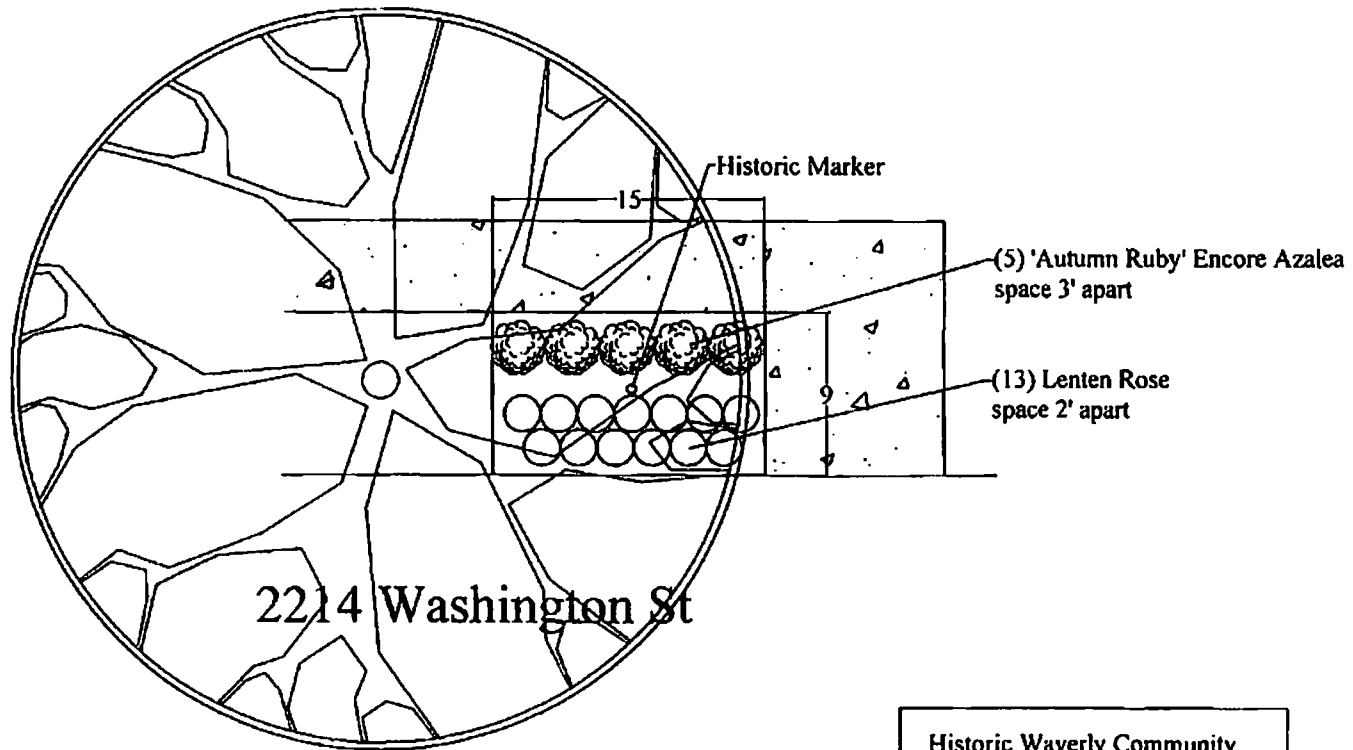
  
City Manager

Approved as to form:

  
City Attorney

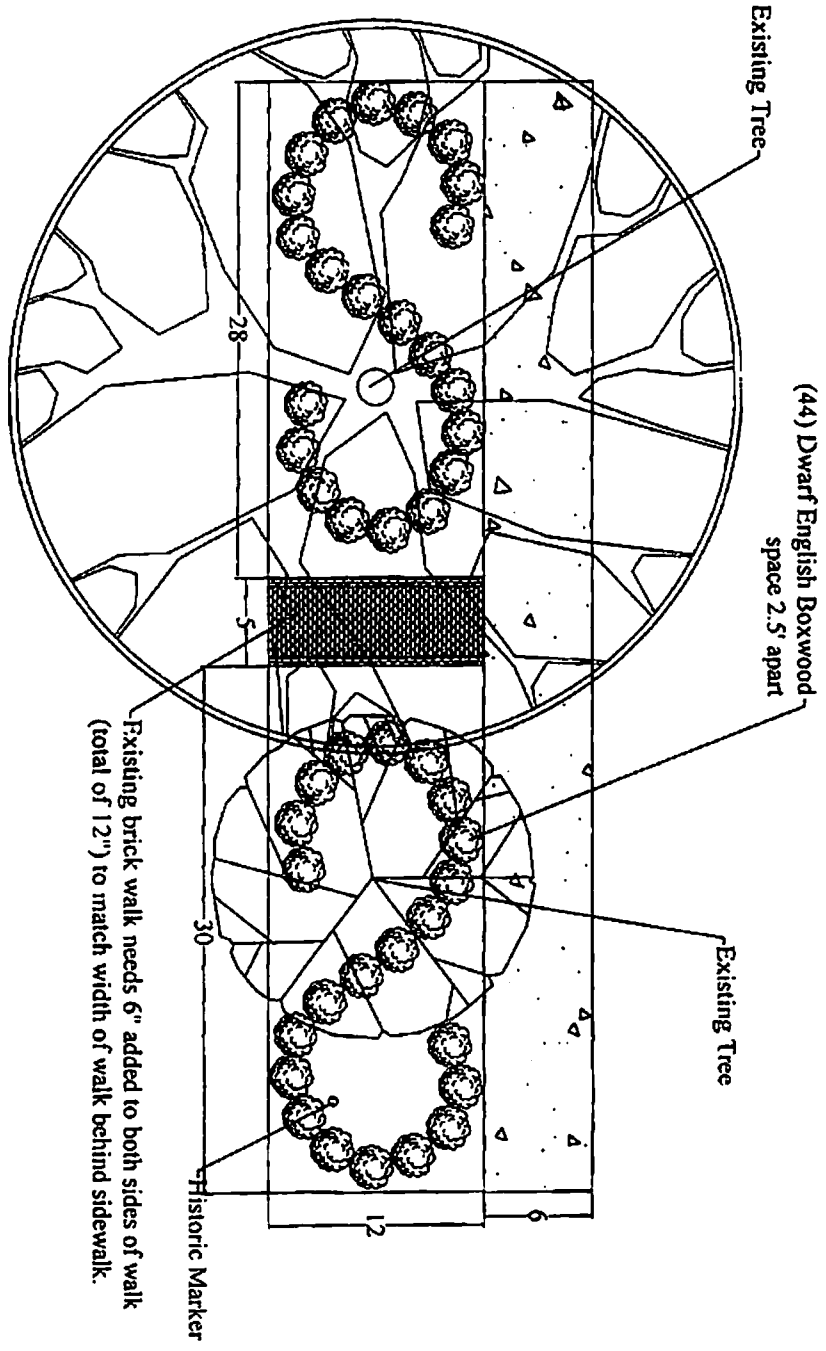
ATTEST:  
  
City Clerk

Introduced: 3/17/2010  
Final Reading: 4/7/2010

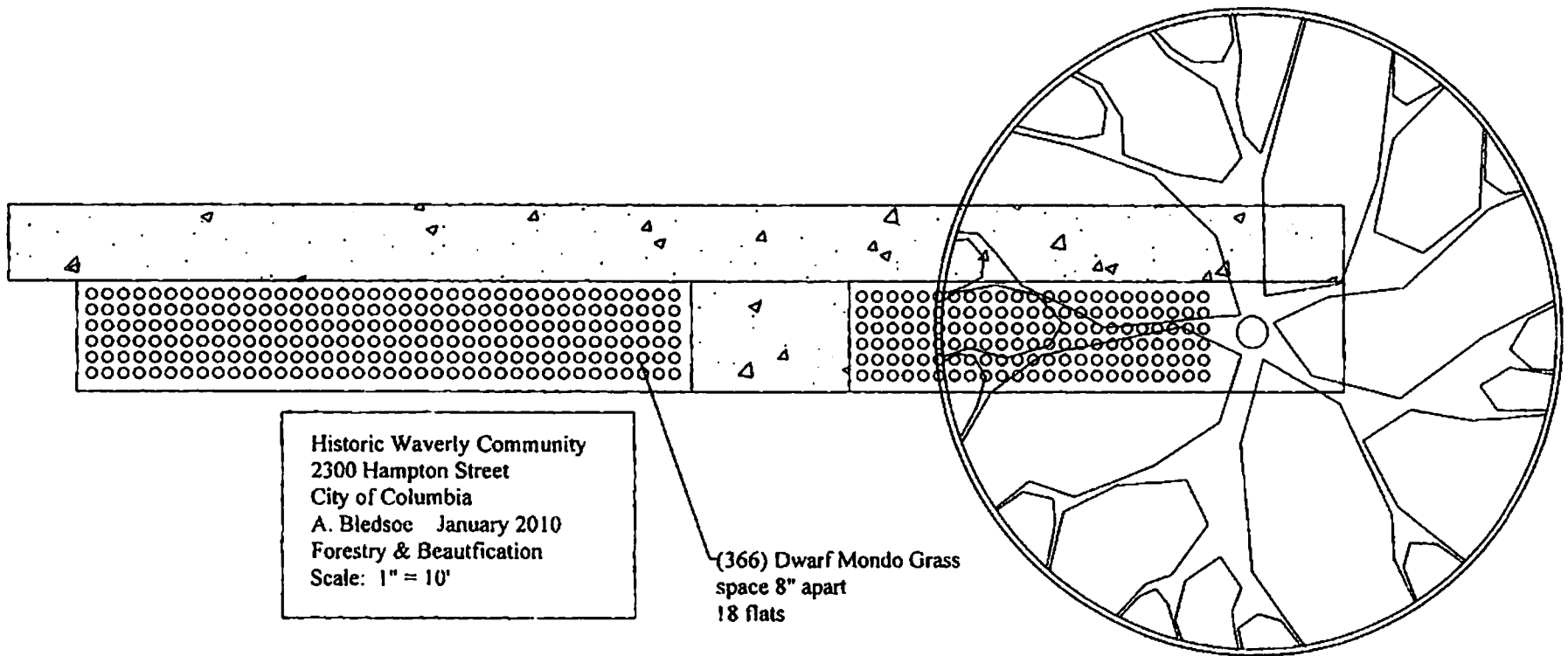


Historic Waverly Community  
 2214 Washington Street  
 City of Columbia  
 A. Bledsoe January 2010  
 Forestry & Beautification  
 Scale: 1" = 10'

# 2214 Hampton Street



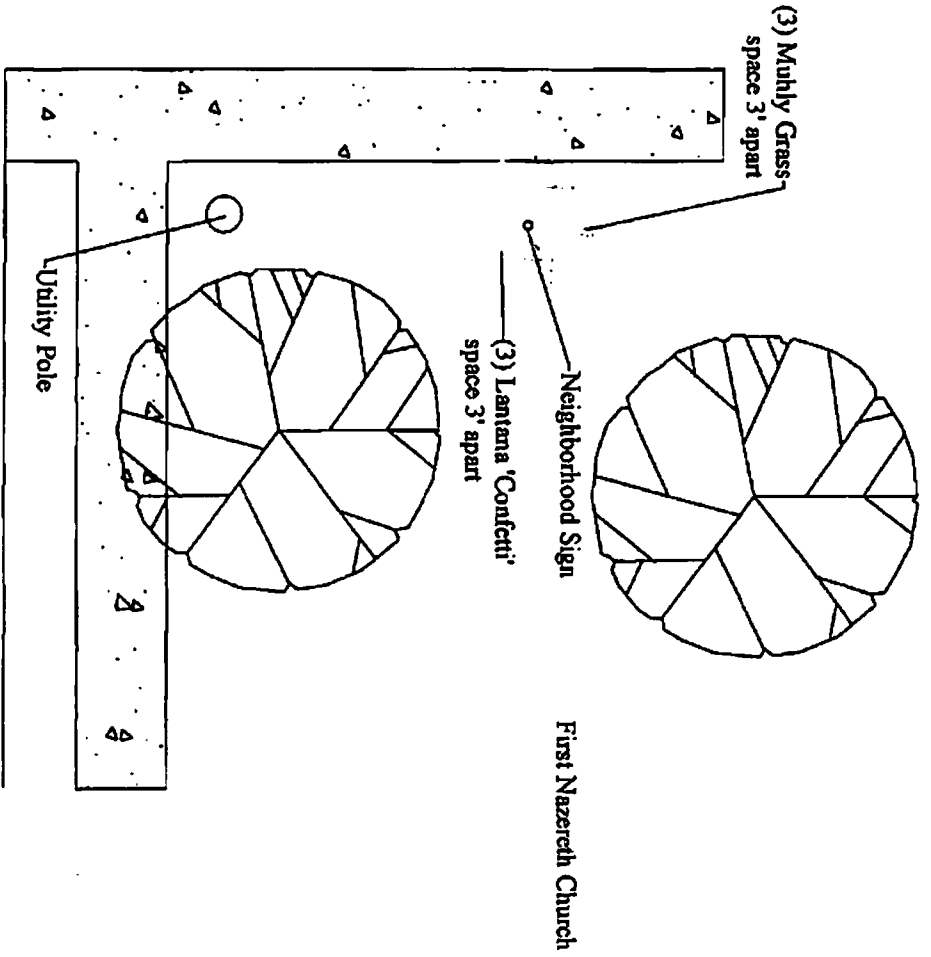
Historic Waverly Community  
 2214 Hampton Street  
 City of Columbia  
 A. Bledsoe January 2010  
 Forestry & Beautification  
 Scale: 1" = 10'



Historic Waverly Community  
2300 Hampton Street  
City of Columbia  
A. Bledsoe January 2010  
Forestry & Beautification  
Scale: 1" = 10'

(366) Dwarf Mondo Grass  
space 8" apart  
18 flats

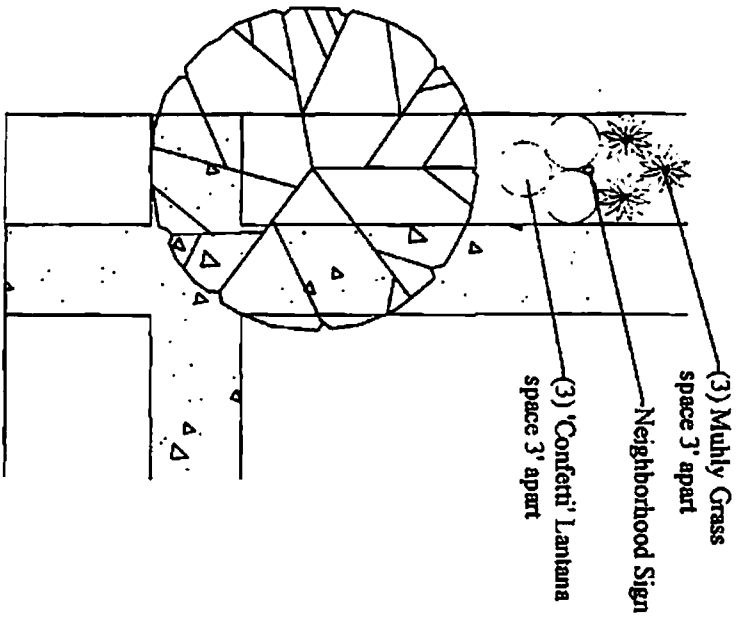
1200 Heidt Street



2300 Gervais Street

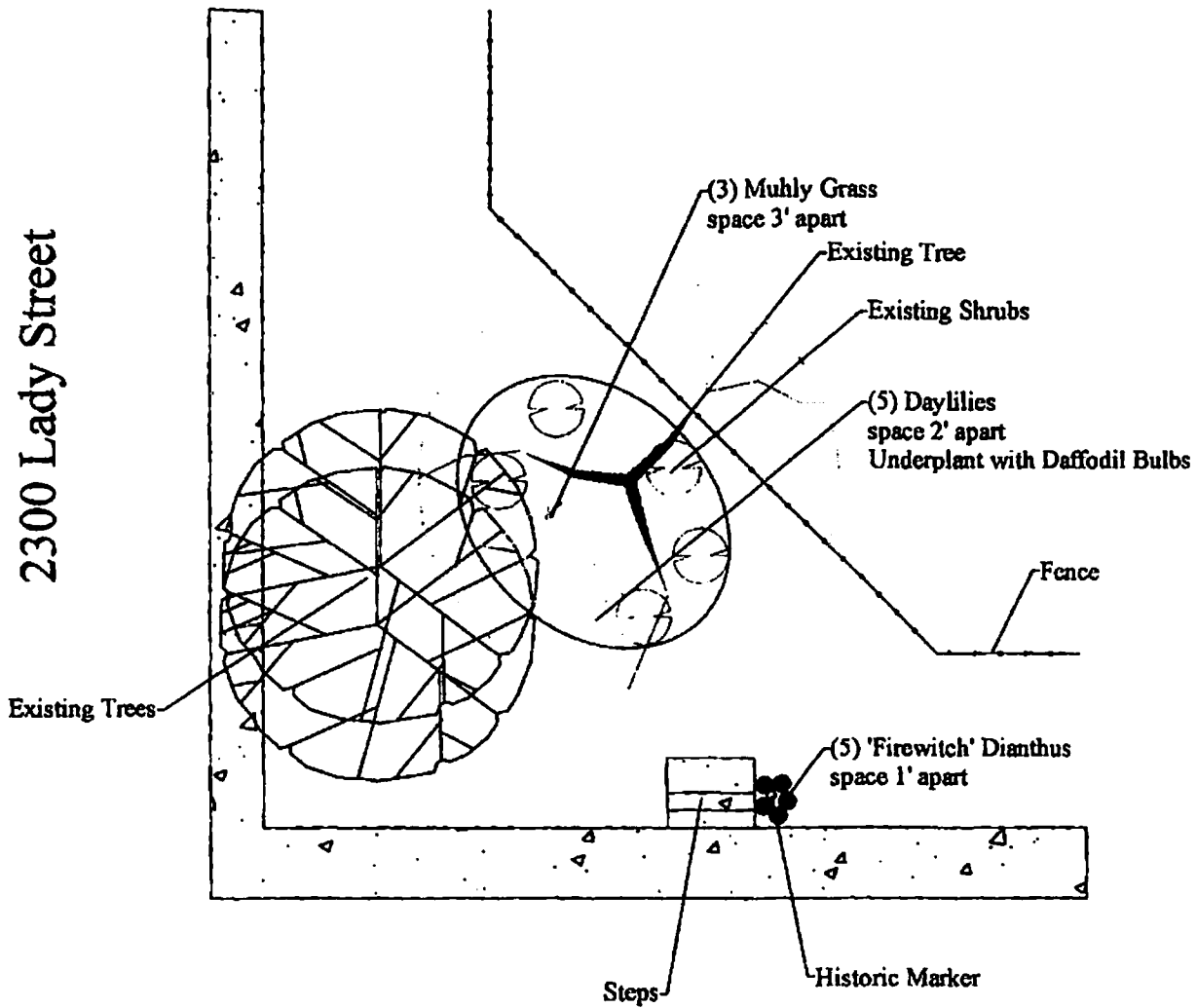
Historic Waverly Community  
Corner of Gervais & Heidt Streets  
City of Columbia  
A. Bledsoe January 2010  
Forestry & Beautification  
Scale: 1" = 10'

# 1200 Pine Street



# 2200 Gervais Street

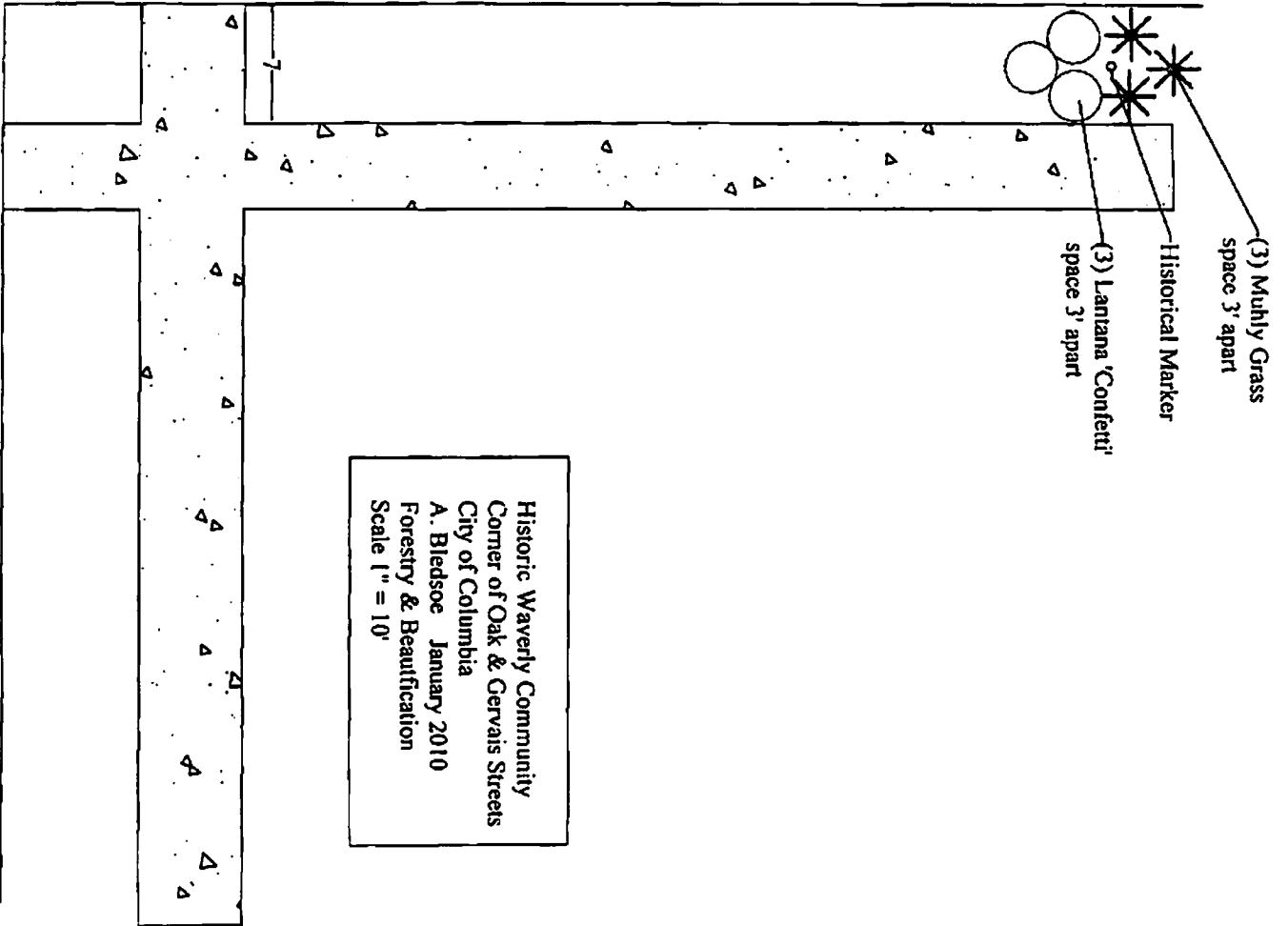
Historic Waverly Community  
Corner of Gervais & Pine Streets  
City of Columbia  
A. Bledsoe January 2010  
Forestry & Beautification  
Scale: 1" = 10'



Historic Waverly Community  
 Corner of Lady & Heidt Streets  
 City of Columbia  
 A. Bledsoe January 2010  
 Forestry & Beautification  
 Scal: 1" = 10'

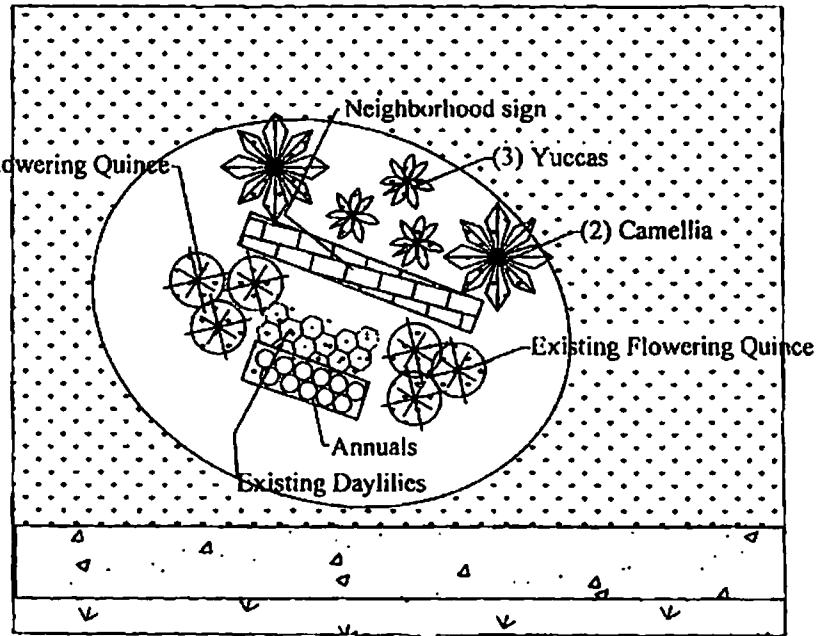


1200 Oak Street



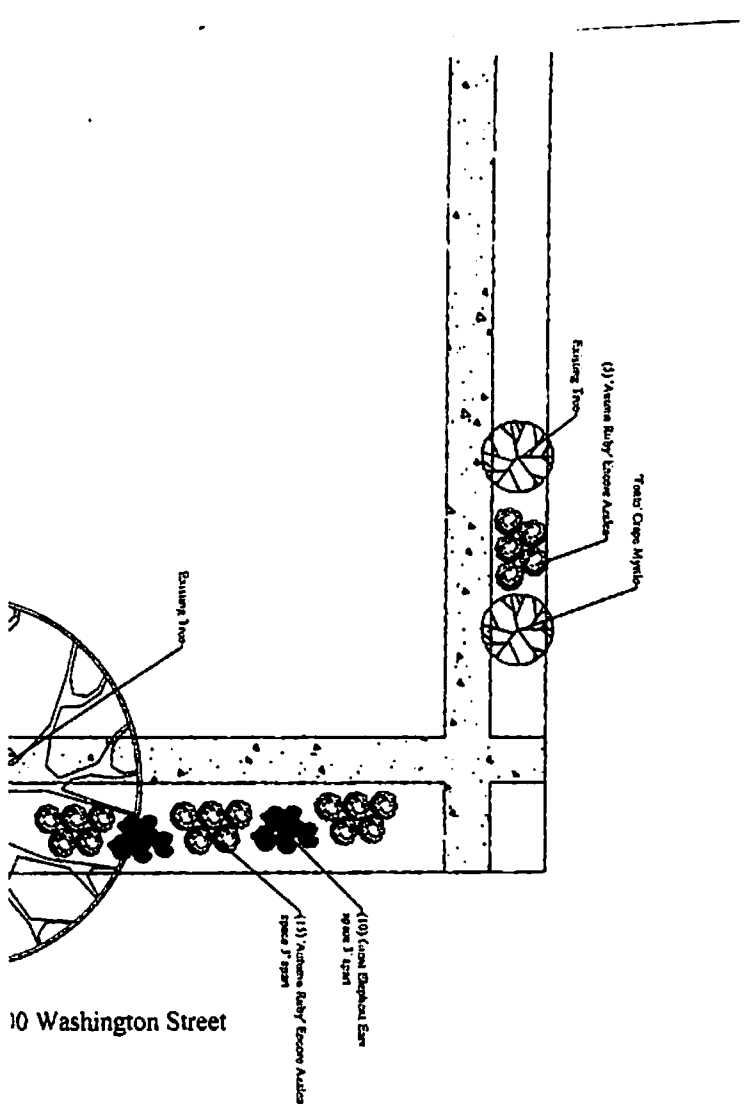
2300 Gervais Street

**2400  
Hampton  
Street**

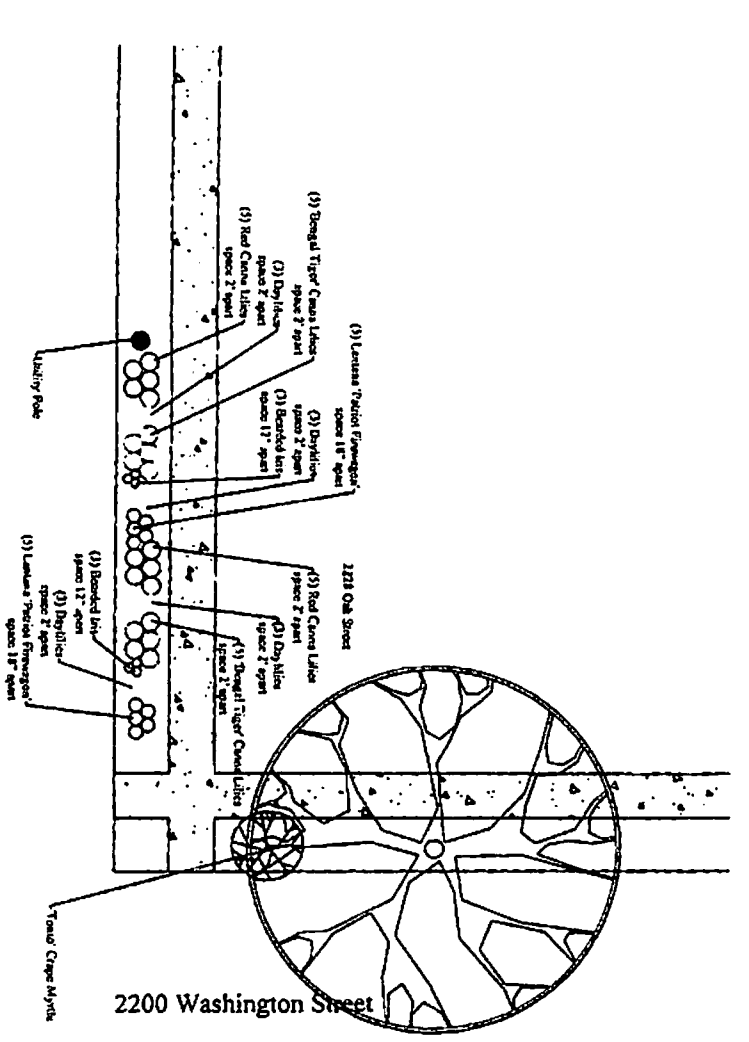


**1400 N.  
Millwood  
Avenue**

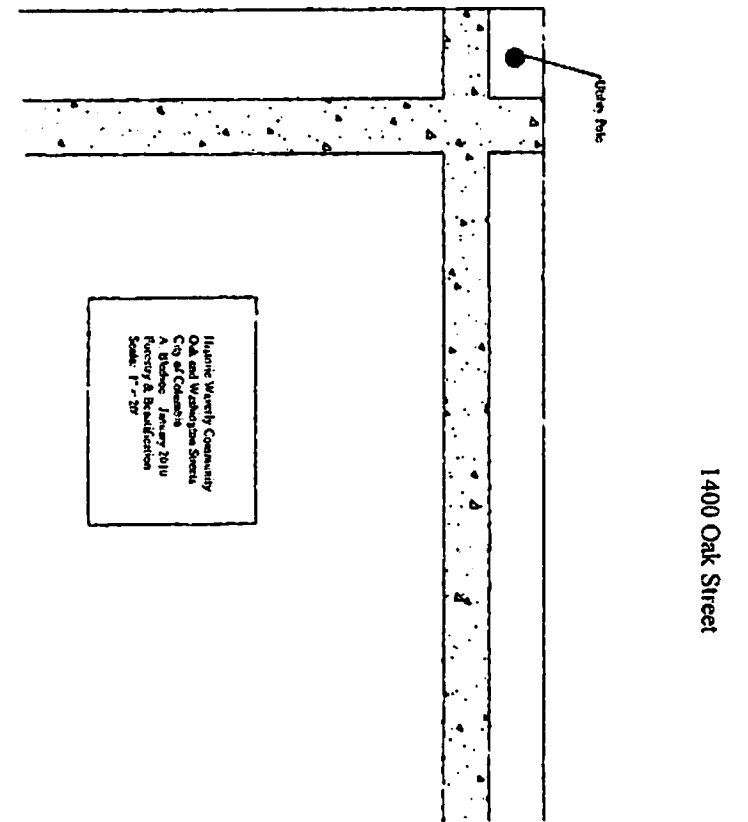
Historic Waverly Neighborhood  
Hampton St. & N. Millwood Ave.  
City of Columbia  
A. Bledsoe January 2010  
Forestry & Beautification  
Scale: 1" = 10'



10 Washington Street

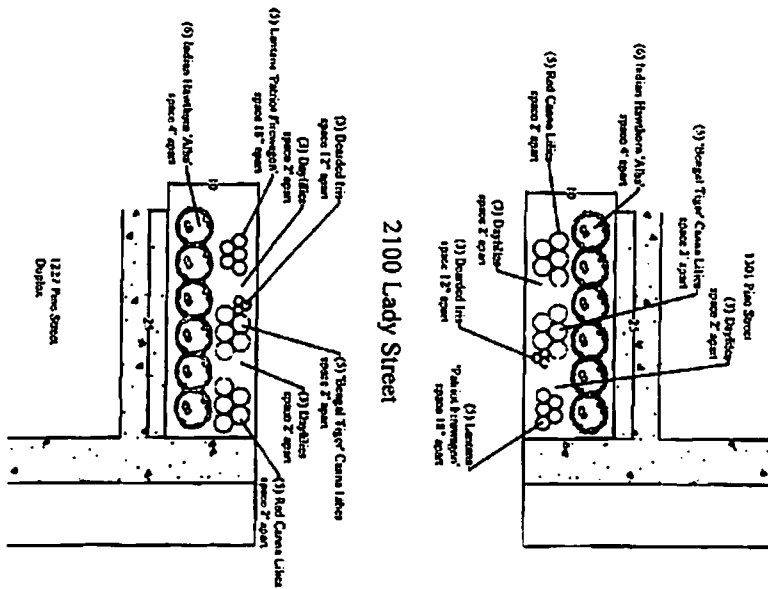


2200 Washington Street

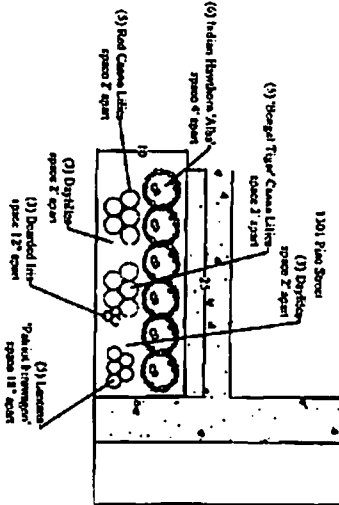


1400 Oak Street

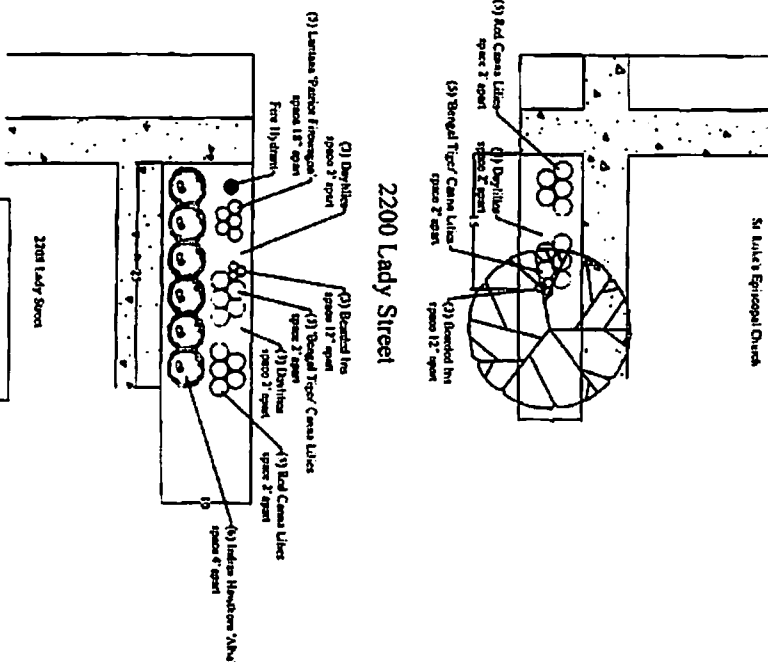
Historic Worthy Community  
 Oak and Washington Streets  
 Co of Columbia  
 A Bridge January 2010  
 Factory & Renovation  
 Scale: 1" = 20'



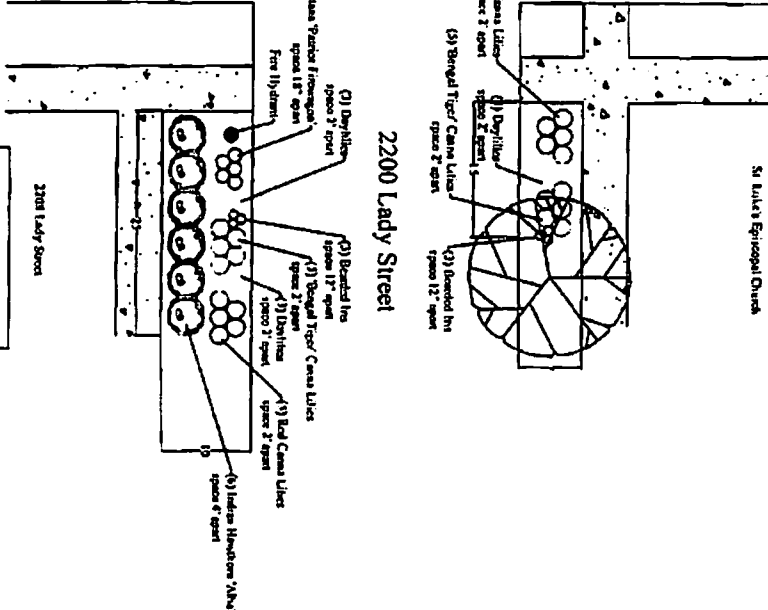
1200 Pine Street



1300 Pine Street



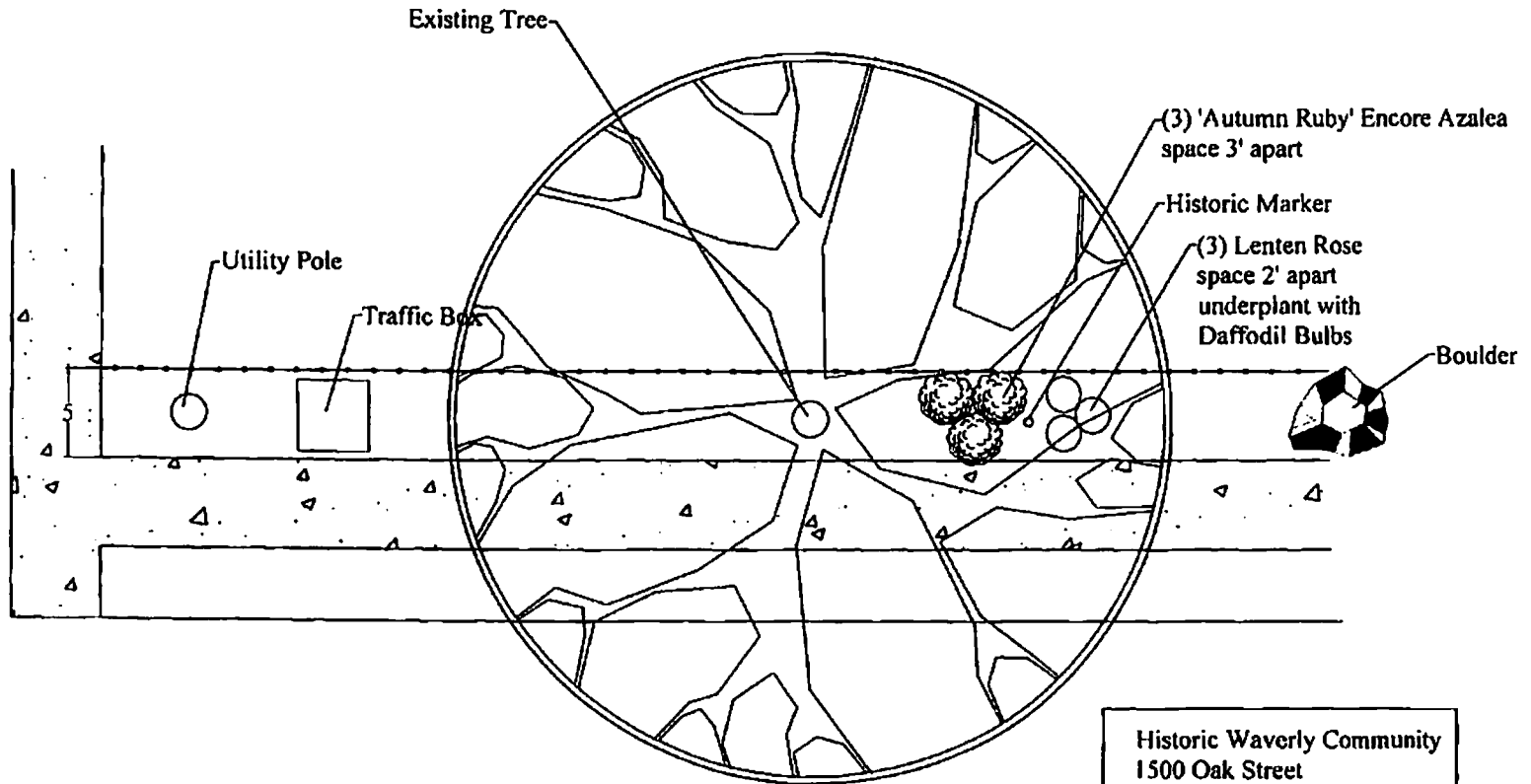
2100 Lady Street



2200 Lady Street

Historic Waverly Neighborhood  
Center of Lady St. & Pine St.  
City of Columbia  
A. Redden, January 2010  
Survey & Specifications  
Scale: 1" = 20'

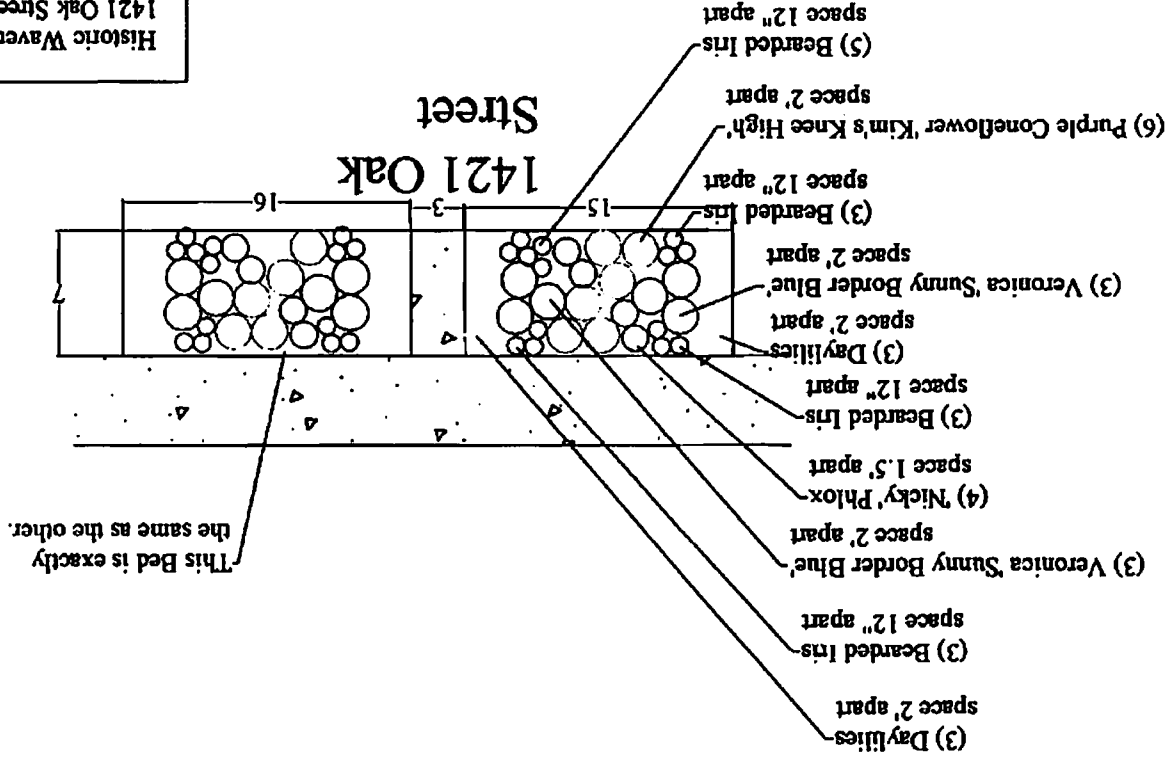
2300 Taylor Street



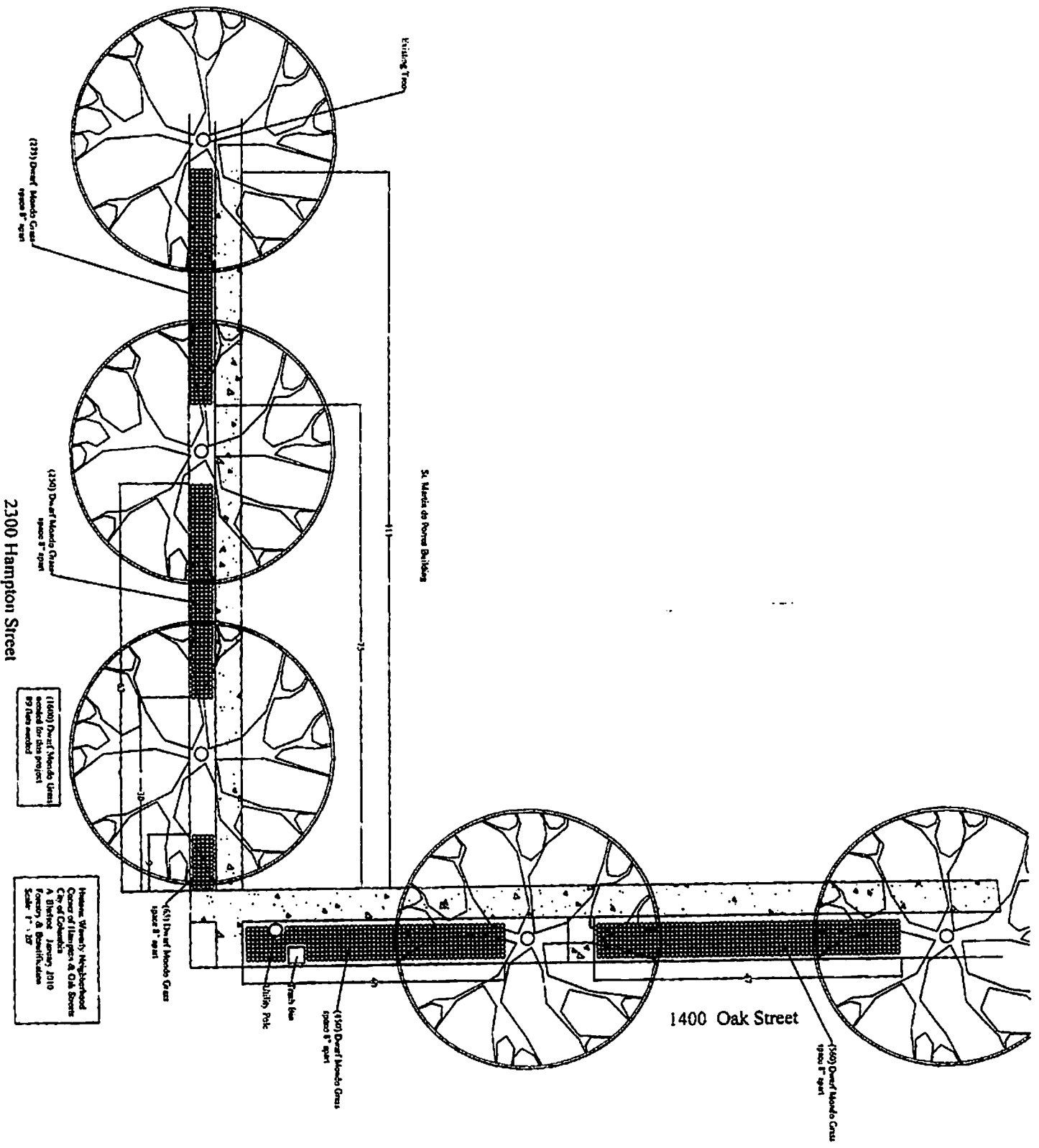
1500 Oak Street

Historic Waverly Community  
1500 Oak Street  
City of Columbia  
A. Bledsoe January 2010  
Forestry & Beautification  
Scale: 1" = 10'

Historic Waverly Community  
 1421 Oak Street  
 City of Columbia  
 A. Bledsoe January 2010  
 Forestry & Beautification  
 Scale: 1" = 10'



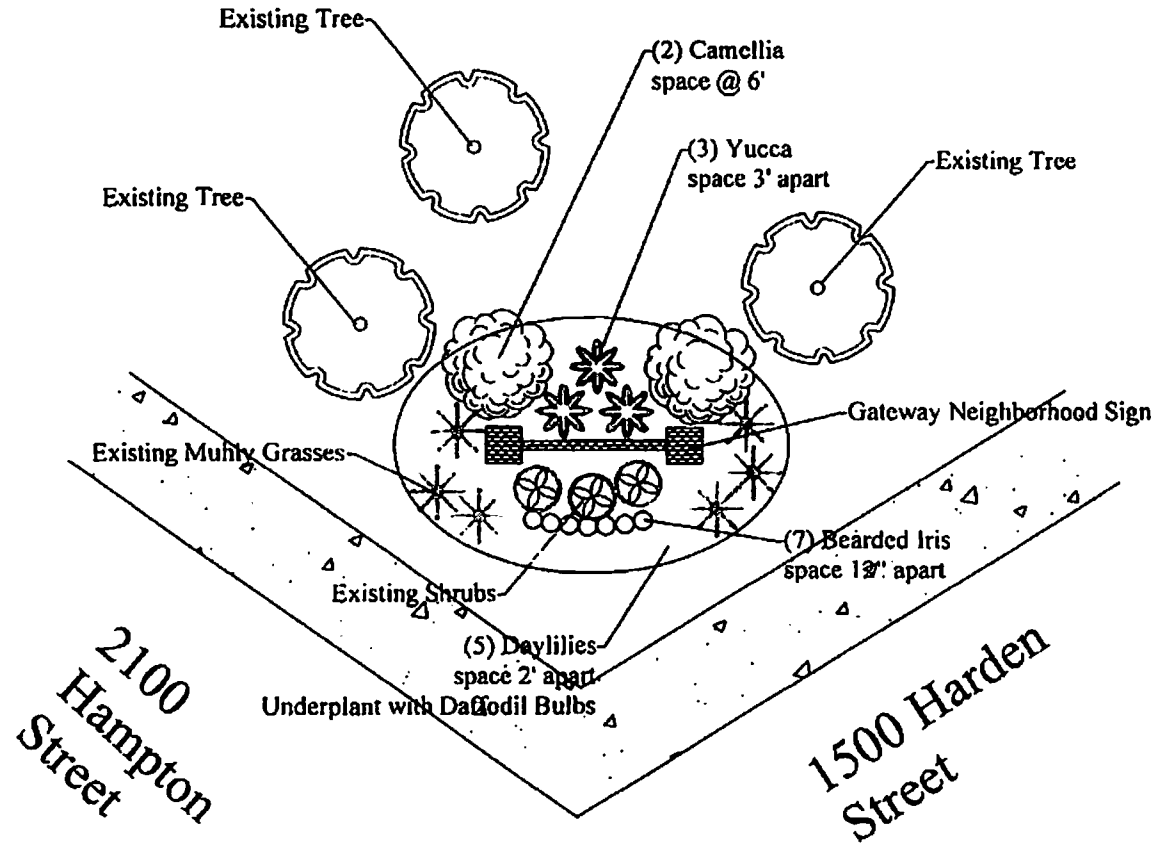




(118) Dwarf Mondo Grass  
spaced 8' apart  
for new building

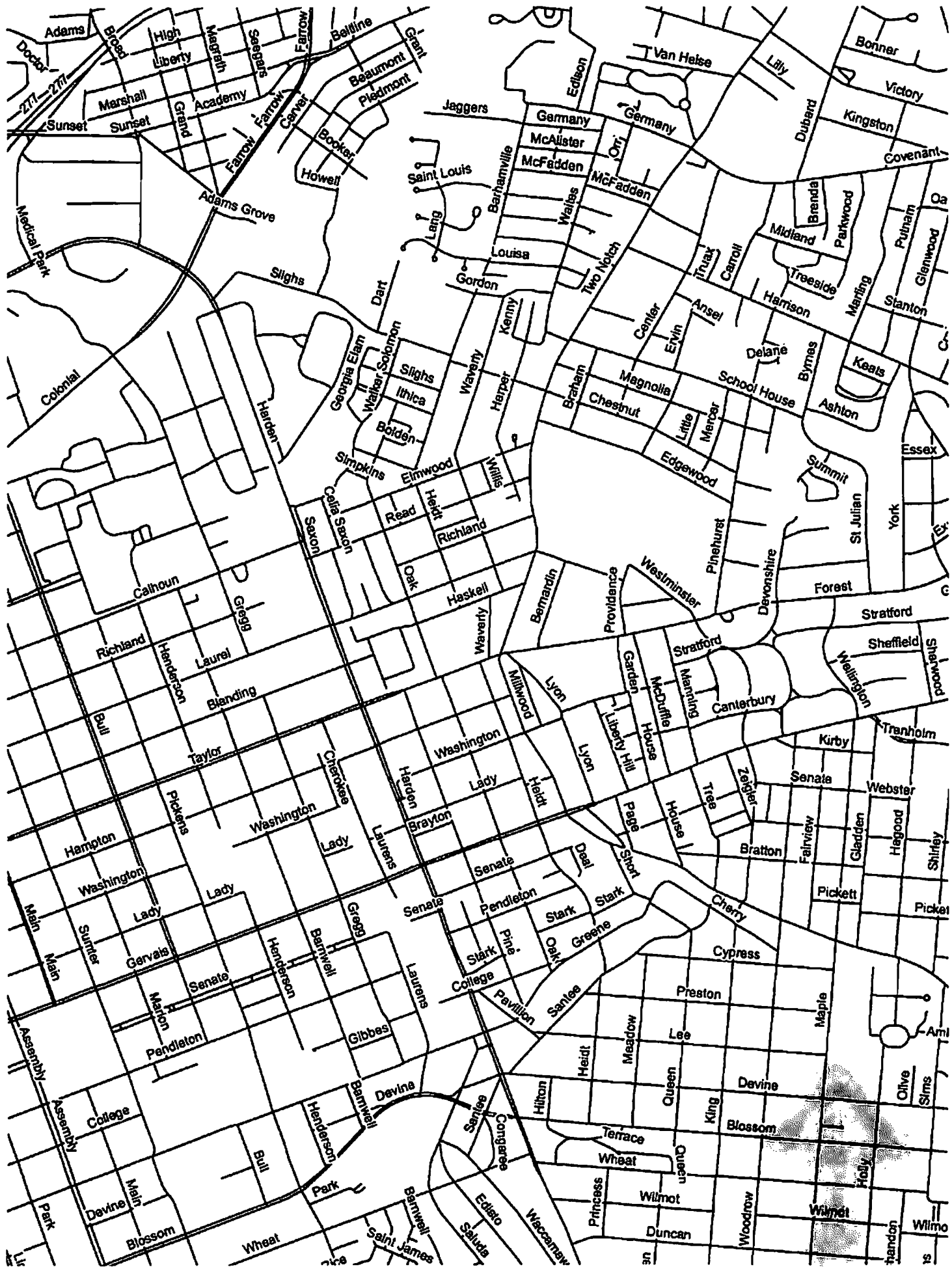
Reserve Warranty Neighborhood  
Center of Hampton & Oak Streets  
in Historic January 2010  
in Center of Hampton & Oak Streets  
Scale: 1" = 10'

Allen University Dormitory



Historic Waverly Community  
Corner of Hampton & Harden Streets  
City of Columbia  
A. Bledsoe January 2010  
Forestry & Beautification  
Scale: 1" = 10'





**Historic Waverly Community  
Plant List**

**'Autumn Beauty' Encore Azaleas**  
*Azalea 'Autumn Beauty'*  
**Bearded Iris**  
*Iris germanica*  
**'Bengal Tiger' Canna Lily**  
*Canna generalis 'Pretoria'*  
**Camellia**  
*Camellia japonica or Camellia sinensis*  
**Daffodils**  
*Narcissus spp.*  
**Dwarf English Boxwood**  
*Buxus sempervirens 'Suffruticosa'*  
**Dwarf Mondo Grass**  
*Ophiopogon japonica 'Nana'*  
**Purple Coneflower 'Kim's Knee High'**  
*Echinacea purpurea 'Kim's Knee High'*  
**Giant Elephant Ears**  
*Colocasia esculenta*  
**Lantana 'Confetti'**  
*Lantana camara 'Confetti'*  
**Lantana 'Patriot Firewagon'**  
*Lantana camara 'Patriot Firewagon'*  
**'Nicky' Phlox**  
*Phlox paniculata 'Nicky'*  
**Muhly Grass**  
*Muhlenbergia capillaries*  
**Red Canna Lily**  
*Canna generalis 'The President'*  
**'Tonto' Crape Myrtle**  
*Lagerstroemia indica 'Tonto'*  
**Veronica 'Sunny Border Blue'**  
*Veronica spicata 'Sunny Border Blue'*  
**Yucca**  
*Yucca filimentosa*