

ORDINANCE NO.: 2019-087

Amending the City of Columbia Comprehensive Plan 2018 Future Land Use Map to include 121 and 141 Sparkleberry Crossing Road; Richland County TMS# 25705-07-28; annexed by Ordinance No.: 2019-077 enacted October 15, 2019

ORIGINAL
STAMPED IN RED

WHEREAS, the City of Columbia and community at large recognize the value of planning for future development and growth; and,

WHEREAS, City Council approved Ordinance No.: 2008-085 on October 1, 2008 adopting the City of Columbia Comprehensive Plan 2018 in accordance with the South Carolina Comprehensive Planning Act of 1994 (Title 6, Chapter 29 of the SC Code); and,

WHEREAS, City Council approved Ordinance No.: 2015-014 on February 17, 2015 amending the City of Columbia Comprehensive Plan 2018 deleting the "Existing and Future Land Use Components of the Physical Area Development Element of The Columbia Plan: 2018" and replaced it with "Plan Columbia Land Use Plan Putting the Pieces in Place", along with all the maps and policies contained therein; and,


WHEREAS, 121 and 141 Sparkleberry Crossing Road; Richland County TMS# 25705-07-28, filed for petition on July 23, 2019, and shall be assigned the designated future land use classification of Regional Activity Corridor (AC-3), and the Future Land Use Map shall be amended accordingly; and,

WHEREAS, the City of Columbia Planning Commission has provided input and recommendations in response to the public input and findings NOW, THEREFORE,


BE IT ORDAINED by the Mayor and City Council of the City of Columbia this 7th day of January, 2020, that 121 and 141 Sparkleberry Crossing Road; Richland County TMS# 25705-07-28, annexed into the City of Columbia by Ordinance No.: 2019-077 enacted on October 15, 2019, shall be incorporated into Plan Columbia Land Use Plan Putting the Pieces in Place adopted by Ordinance No.: 2015-014 on February 17, 2015. This property shall be apportioned to City Council District 4, Census Tract 114.14, contains 1.46 acres, and shall be assigned a land use classification of Regional Activity Corridor (AC-3).

Requested by:

Assistant City Manager Gentry


Mayor

Approved by:



City Manager

Approved as to form:


City Attorney

Introduced: 12/17/2019
Final Reading: 1/7/2020

ATTEST:


City Clerk

Future Land Use Map

121 and 141 Sparkleberry Crossing Road, TMS# 25705-07-28,
Current FLU: Mixed Use Corridor, Proposed Interim FLU: AC-3

Department of Planning &
Development Services


Legend

CITY LIMITS

PARCELS

- UCMR-1 - Urban Core Mixed Residential-1
- UCMR-2 - Urban Core Mixed Residential-2
- UCMR-3 - Urban Core Mixed Residential-3
- UEUR - Urban Edge Mixed Residential
- UEMF - Urban Edge Multi-Family
- UCR-1 - Urban Core Residential Small Lot
- UCR-2 - Urban Core Residential Large Lot
- UER-1 - Urban Edge Residential Small Lot
- UER-2 - Urban Edge Residential Large Lot
- UCAC-1 - Urban Core Neighborhood Activity Center
- UCAC-2 - Urban Core Community Activity Center
- UEAC-1 - Urban Edge Community Activity Center
- UEAC-2 - Urban Edge Regional Activity Center
- UCAC-3 - Urban Core Regional Activity Center
- UEAC-3 - Urban Edge Regional Activity Center
- AC-1 - Neighborhood Activity Corridor
- AC-2 - Community Activity Corridor
- AC-3 - Regional Activity Corridor
- EC - Employment Campus
- IND - Industrial
- TU - Transportation & Utilities
- SD-1 - Sports/Amusement District
- SD-2 - Civic/Institutional Districts
- SD-3 - Central Business District
- SD-4 - Riverbanks Zoo and Garden
- SD-5 - Universities/Colleges
- SD-6 - Fort Jackson

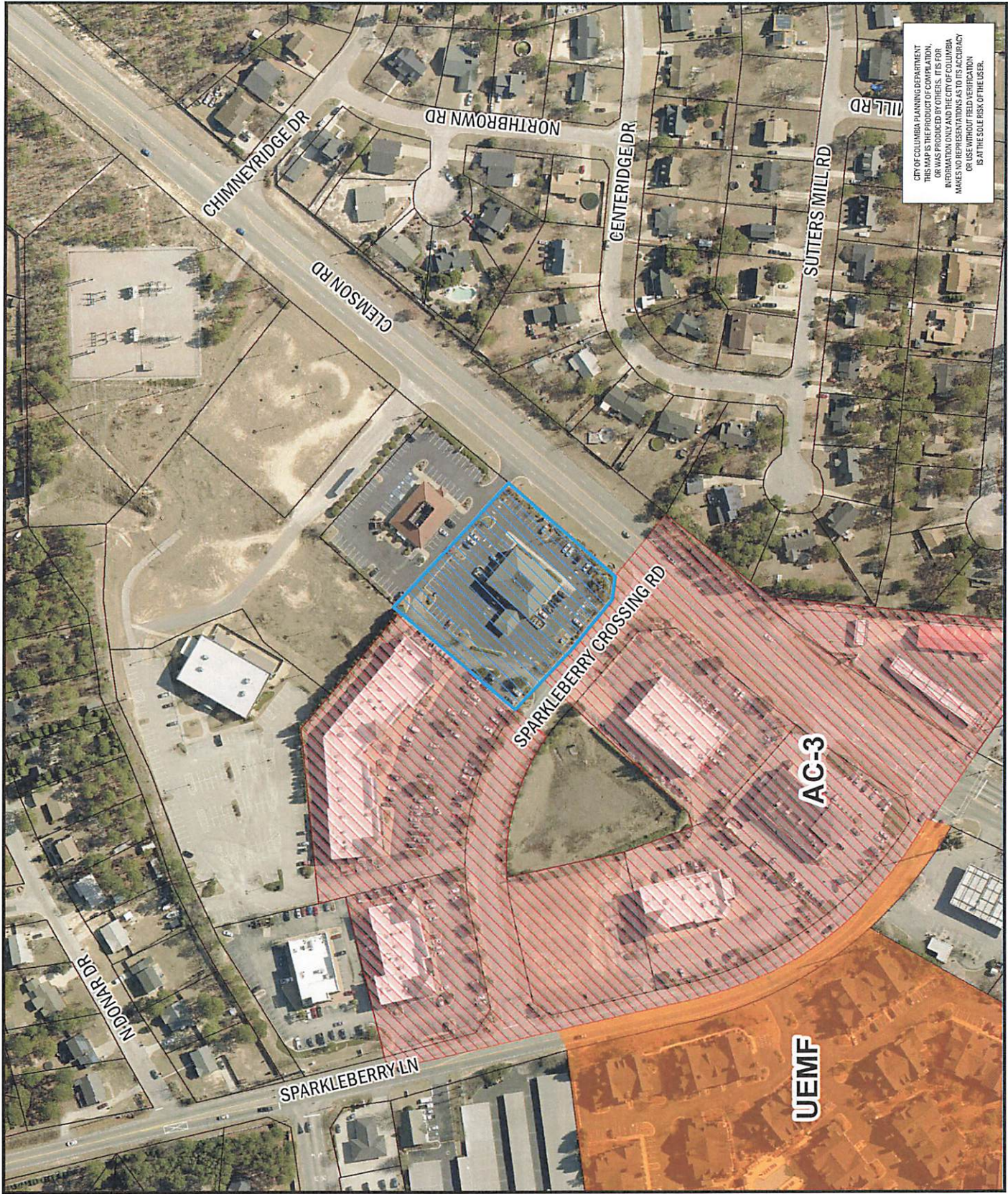
0 50 100 200 Feet



ORIGINAL PREPARATION/DATE:
This map was prepared by:
Shane Shaughnessy
July 29, 2019



We Are Columbia



CITY OF COLUMBIA PLANNING DEPARTMENT
THIS MAP IS THE PRODUCT OF COMPARISON,
OR WAS PRODUCED BY OTHERS. ITS FOR
INFORMATION ONLY AND THE CITY OF COLUMBIA
MAKES NO REPRESENTATIONS AS TO ITS ACCURACY
OR USE WITHOUT FIELD VERIFICATION
IS AT THE SOLE RISK OF THE USER.