

RESOLUTION NO.: 2002-038

Authorizing acceptance and dedication of street known as Hamptonwood Way
in Hamptonwood, Phase 3, to the City of Columbia,
Richland County TMS #16412-01-02 (portion); CF #196-17

WHEREAS, the above referenced property is in the City limits of Columbia and its
development plans included dedication of Hamptonwood Way to the City of Columbia; and,

WHEREAS, the Engineering Division has inspected the said street on the said property
and found that it was constructed in compliance with the City's ordinances and regulations and
recommends approval for acceptance; NOW, THEREFORE

BE IT RESOLVED by the Mayor and City Council of the City of Columbia, South Carolina
on this 10th day of July, 2002 that the City of Columbia accept dedication of the aforesaid street.

The said street is located as shown on drawings on file in the office of the City's Director
of Engineering under file reference #196-17.

Requested by:

Engineering Department _____



Mayor

Approved by:



City Manager

Approved as to form:



City Attorney

ATTEST.



City Clerk

Introduced: 7/10/2002

Final Reading: 7/10/2002

ORIGINAL
STAMPED IN
RECEIVED

EASEMENT NOTE
 ALL EASEMENTS SHOWN ON THIS SUBDIVISION SHALL HAVE EASEMENTS ARISING AS DESCRIBED IN THE FOLLOWING:
 1. ALL EASEMENTS SHALL BE IN ACCORDANCE WITH THE CITY OF COLUMBIA ZONING ORDINANCE.
 2. ALL EASEMENTS SHALL BE IN ACCORDANCE WITH THE CITY OF COLUMBIA SUBDIVISION ORDINANCE.
 3. ALL EASEMENTS SHALL BE IN ACCORDANCE WITH THE CITY OF COLUMBIA PLANNING AND ZONING DEPARTMENT.
 4. ALL EASEMENTS SHALL BE IN ACCORDANCE WITH THE CITY OF COLUMBIA PLANNING AND ZONING DEPARTMENT.

WETLANDS NOTE
 PROTECTED WETLANDS, AS DETERMINED BY A.R.K. ENVIRONMENTAL SERVICES, INC. (A.R.K. E.S.I.), ARE SHOWN ON THIS SUBDIVISION. ALL PROTECTED WETLANDS SHALL BE PRESERVED AND PROTECTED IN ACCORDANCE WITH THE CITY OF COLUMBIA SUBDIVISION ORDINANCE AND THE CITY OF COLUMBIA PLANNING AND ZONING DEPARTMENT. ALL PROTECTED WETLANDS SHALL BE PRESERVED AND PROTECTED IN ACCORDANCE WITH THE CITY OF COLUMBIA SUBDIVISION ORDINANCE AND THE CITY OF COLUMBIA PLANNING AND ZONING DEPARTMENT.

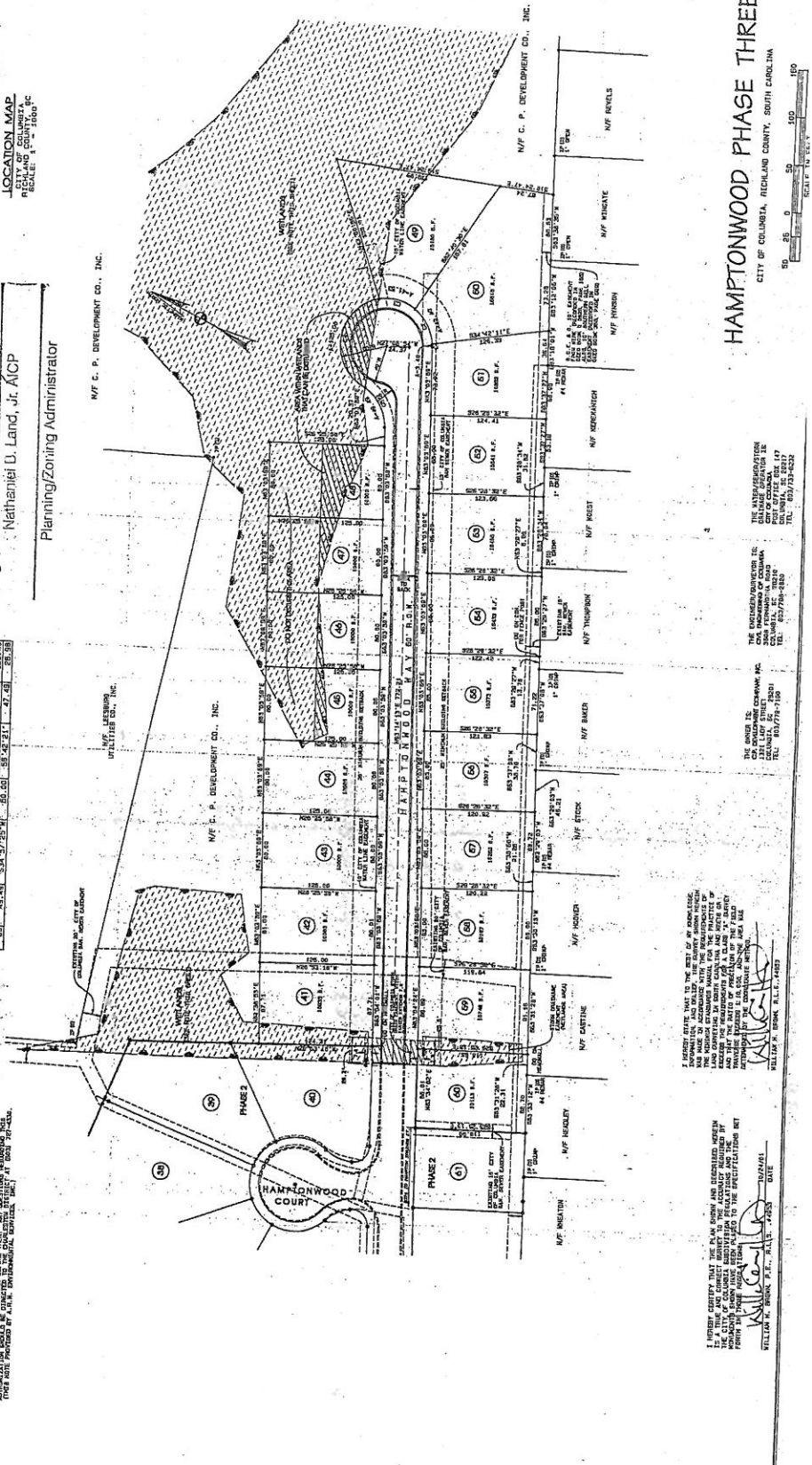
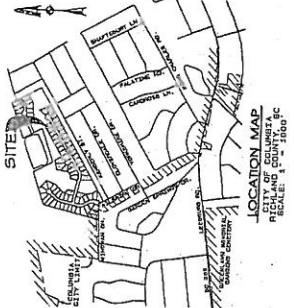
- NOTES & REFERENCES**
1. PRELIMINARY PLAT FOR THE CITY OF COLUMBIA DEVELOPMENT CO., INC. BY CIVIL ENGINEERING OF COLUMBIA DATED 10/20/88.
 2. PHASE 2 & 3 LOTS.
 3. PHASE 2 & 3 LOTS.
 4. PHASE 2 & 3 LOTS.
 5. PHASE 2 & 3 LOTS.
 6. PHASE 2 & 3 LOTS.
 7. PHASE 2 & 3 LOTS.
 8. PHASE 2 & 3 LOTS.
 9. PHASE 2 & 3 LOTS.
 10. PHASE 2 & 3 LOTS.

LOT AREA DATA

LOT	AREA (SQ. FT.)	AREA (SQ. YD.)
1	10,000	111.11
2	10,000	111.11
3	10,000	111.11
4	10,000	111.11
5	10,000	111.11
6	10,000	111.11
7	10,000	111.11
8	10,000	111.11
9	10,000	111.11
10	10,000	111.11

FINAL PLAT
 The Subdivision Plat shown herein has been found to comply with the City of Columbia Subdivision Ordinance and has been approved by the Planning and Zoning Commission of the City of Columbia, South Carolina.

Date: *6/14/92*
Nathaniel U. Land, Jr.
 Nathaniel U. Land, Jr., AICP
 Planning/Zoning Administrator



I HEREBY CERTIFY THAT THE PLAT SHOWN AND DESCRIBED HEREIN IS A TRUE AND CORRECT REPRESENTATION OF THE SUBDIVISION AND THAT THE CITY OF COLUMBIA SUBDIVISION ORDINANCE AND THE CITY OF COLUMBIA PLANNING AND ZONING DEPARTMENT HAVE REVIEWED AND APPROVED THE SAME.

Nathaniel U. Land, Jr.
 Nathaniel U. Land, Jr., AICP
 Planning/Zoning Administrator

HAMPTONWOOD PHASE THREE
 CITY OF COLUMBIA, RICHLAND COUNTY, SOUTH CAROLINA

SCALE: 1" = 100'