

RESOLUTION R-2004-005

*RELEASE AND ABANDONMENT OF PORTIONS OF THE CITY'S EXISTING
WATER MAIN AND SANITARY SEWER EASEMENTS ALONG
RICHLAND COUNTY TMS#13716-01-08 AND TMS#13716-01-16;
WOODHILL MALL REDEVELOPMENT, PHASE A, STORAGE FACILITY; CF#270-10A*

WHEREAS, the redevelopment plans for Woodhill Mall were approved with relocation of portions of the City's existing water and sanitary sewer mains on the property; and

WHEREAS, new water mains and sanitary sewer mains have been constructed and conveyed to the City of Columbia; and


WHEREAS, a request has been made for the City to release and abandon the portions of the existing easements along the subject property where the previous water main and sanitary sewer main are no longer in service and to eliminate encroachments; NOW, THEREFORE,

BE IT RESOLVED by the Mayor and City Council this 21st day of January, 2004, for and in consideration of the sum of One (\$1.00) Dollar, each to the other paid, and the granting of water mains, sanitary sewer mains and easements to the City of Columbia, the receipt of which are hereby acknowledged, the City Manager is hereby authorized to execute a release and abandonment instrument from the City of Columbia that remises, releases and forever quitclaims unto WOODHILL (E & A), LLC, its successors and assigns, that portion of the City's existing 15' water main easement shown by a cross-hatch pattern on the drawing attached hereto and made a part hereof as Exhibit "A" and that portion of the City's existing 15' sanitary sewer easement shown by a cross-hatch pattern on the drawing attached hereto and made a part hereof as Exhibit "B".

Said drawings also being on file in the Department of Engineering under file reference #270-10A.


Requested by:

Engineering Department




Mayor

Approved by:




City Manager

Approved as to form:



City Attorney

ATTEST:



City Clerk

Introduced: 1/21/2004

Final Reading: 1/21/2004

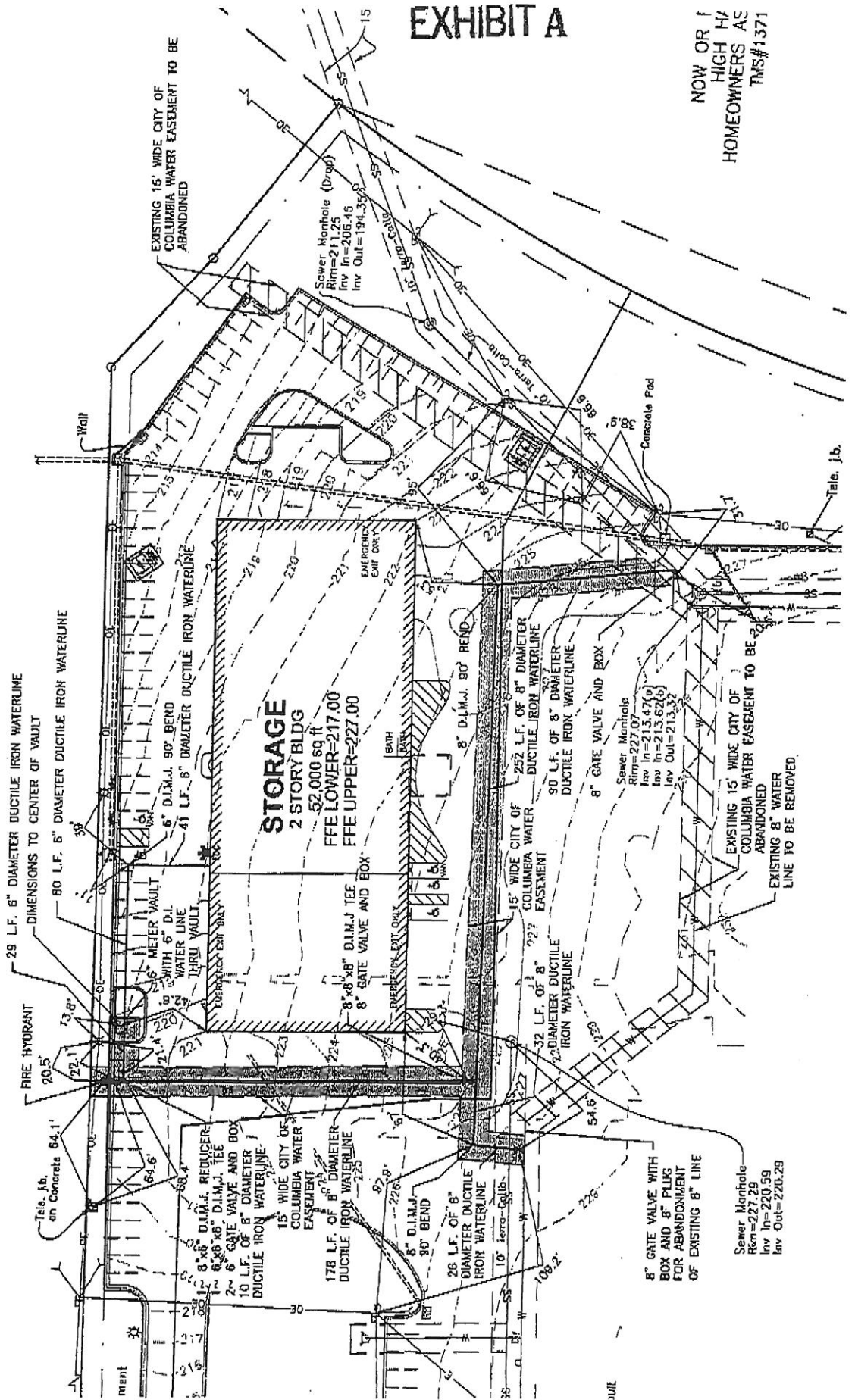
ORIGINAL
STAMPED IN REC

EXHIBIT A

NOW OR FORMERLY
HIGH HOMEOWNERS AS
TMS#1371



NOW OR FORMERLY
AHEPA 284, INC.
TMS#13716-1-11



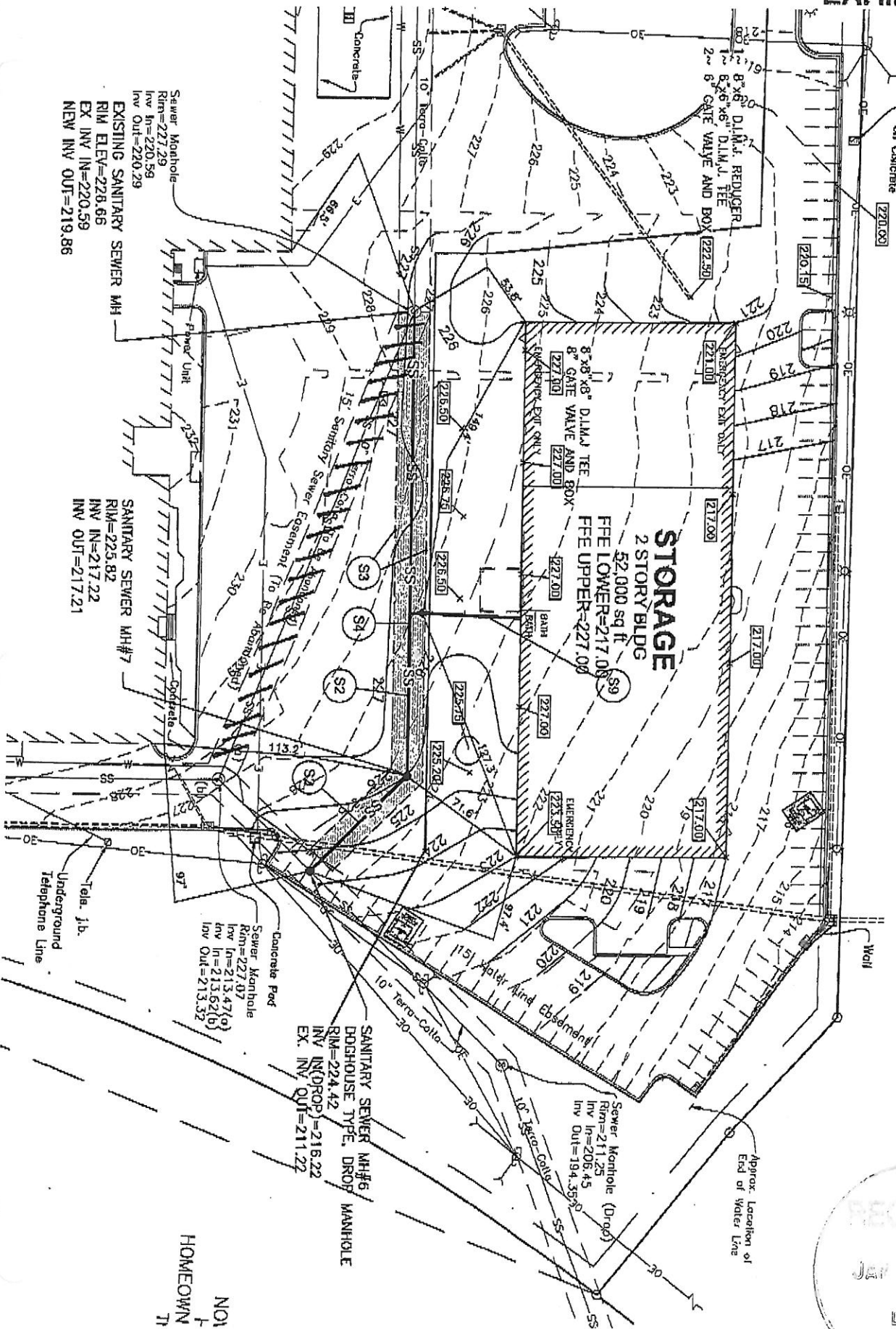
Sewer Manhole
Rim=227.29
Inv In=220.59
Inv Out=220.29

8" GATE VALVE WITH
BOX AND 8" PLUGS
FOR ABANDONMENT
OF EXISTING 8" LINE

EXISTING 15' WIDE CITY OF
COLUMBIA WATER
ABANDONED
EXISTING 8" WATER
LINE TO BE REMOVED

3011

EXHIBIT B



Sewer Manhole
 RIM=227.29
 INV IN=220.59
 INV OUT=220.29

EXISTING SANITARY SEWER MH

SANITARY SEWER MH#7
 RIM=225.82
 INV IN=217.22
 INV OUT=217.21

Sewer Manhole
 RIM=227.07
 INV IN=213.47(a)
 INV IN=213.62(b)
 INV OUT=213.32

Concrete Pad

SANITARY SEWER MH#6
 DROPPED TYPE, DROPS MANHOLE
 RIM=224.42
 INV IN(DROP)=216.22
 EX. INV OUT=211.22

Sewer Manhole (Drop)
 RIM=211.25
 INV IN=206.45
 INV OUT=194.35



NO1
 HOMEOWN
 T1