

ORDINANCE NO.: 2017-071

Amending the City of Columbia Comprehensive Plan 2018 Future Land Use Map for 17.94 acres
W/S Broad River Road and 1435 St. Andrews Road, Richland County TMS No.: 06113-02-40 and 06113-02-30

WHEREAS, the City of Columbia and community at large recognize the value of planning for future development and growth; and,

WHEREAS, City Council approved Ordinance No.: 2008-085 on October 1, 2008 adopting the City of Columbia Comprehensive Plan 2018 in accordance with the South Carolina Comprehensive Planning Act of 1994 (Title 6, Chapter 29 of the SC Code); and,

WHEREAS, City Council approved Ordinance No.: 2015-014 on February 17, 2015 amending the City of Columbia Comprehensive Plan 2018 deleting the "Existing and Future Land Use Components of the Physical Area Development Element of The Columbia Plan: 2018" and replaced it with "Plan Columbia Land Use Plan Putting the Pieces Together," along with all the maps and policies contained therein; and,

WHEREAS, 17.94 acres W/S Broad River Road and 1435 St. Andrews Road, Richland County TMS #06113-02-40 and 06113-02-30 were included within Plan Columbia Land Use Plan Putting the Pieces in Place adopted by City Council on February 17, 2015, and were assigned the designated future land use classification of Civic/Institutional District (SD-2), while the future land use classification of Neighborhood Activity Corridor (AC-1) is more appropriate, and the Future Land Use Map shall be amended accordingly; and,

WHEREAS, the City of Columbia Planning Commission has provided input and recommendations in response to the public input and findings NOW, THEREFORE,

BE IT ORDAINED by the Mayor and City Council of the City of Columbia this 17th day of October, 2017, that the designated land use for 17.94 acres W/S Broad River Road and 1435 St. Andrews Road, Richland County TMS #06113-02-40 and 06113-02-30 were identified as Civic/Institutional District (SD-2) in Plan Columbia Land Use Plan Putting the Pieces Together adopted by Ordinance No.: 2015-014 on February 17, 2015. This property is apportioned to City Council District 1, Census Tracts 104.07 and 104.08, contains 18.45 acres, and the land use classification shall be amended to Neighborhood Activity Corridor (AC-1).

Requested by:

Assistant City Manager Gentry



Mayor

Approved by:



City Manager

Approved as to form:



City Attorney

ATTEST:


City Clerk

Introduced: 10/3/2017
Final Reading: 10/17/2017

ORIGINAL
STAMPED IN RED

17.94 acres W/S Broad River Road and 1435 St. Andrews Road; TMS# 06113-02-40 and 06113-02-30; Existing Richland FLU: SD-2; Proposed FLU: AC-1

Future Land Use Map

Department of Planning & Development Services

Legend

CITY LIMITS

PARCELS

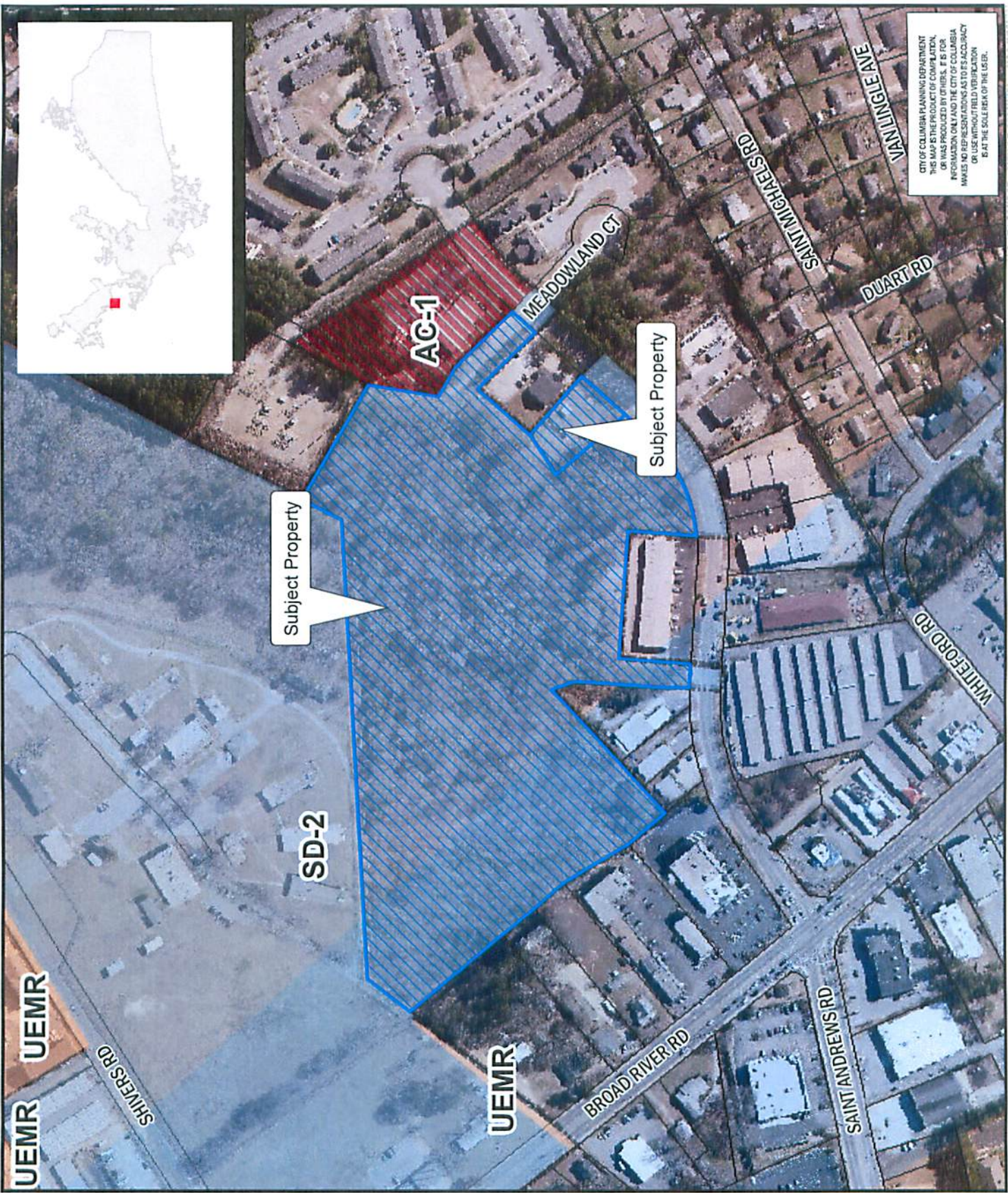
- UCMB-1 - Urban Core Mixed Residential-1
- UCMB-2 - Urban Core Mixed Residential-2
- UEMR - Urban Edge Mixed Residential
- UEMF - Urban Edge Multi-Family
- UCR-1 - Urban Core Residential Small Lot
- UCR-2 - Urban Core Residential Large Lot
- UER-1 - Urban Edge Residential Small Lot
- UER-2 - Urban Edge Residential Large Lot
- UCAC-1 - Urban Core Neighborhood Activity Center
- UCAC-2 - Urban Core Community Activity Center
- UCAC-3 - Urban Core Regional Activity Center
- UERAC-1 - Urban Edge Community Activity Center
- UERAC-2 - Urban Edge Regional Activity Center
- AC-1 - Neighborhood Activity Corridor
- AC-2 - Community Activity Corridor
- AC-3 - Regional Activity Corridor
- EC - Employment Campus
- RD - Industrial
- TU - Transportation & Utilities
- SD-1 - Sports/Amusement District
- SD-2 - Civic/Institutional Districts
- SD-3 - Central Business District
- SD-4 - Research Zone and Campus
- SD-5 - Universities/Colleges
- SD-6 - Fort Jackson



ORIGINAL PREPARATION/DATE:
 This map was prepared by:
 Shane Shaughnessy
 June 20, 2017



We Are Columbia



CITY OF COLUMBIA PLANNING DEPARTMENT
 THIS MAP IS THE PRODUCT OF COMPLETION,
 OR WAS PRODUCED BY OTHERS, IF IS FOR
 INFORMATION ONLY AND THE CITY OF COLUMBIA
 MAKES NO REPRESENTATIONS AS TO ITS ACCURACY
 OR USE WITHOUT FIELD VERIFICATION
 IS AT THE SOLE RISK OF THE USER.