

ORDINANCE NO.: 2017-096

Amending the City of Columbia Comprehensive Plan 2018 Future Land Use Map for the properties located within the Capital City Mill District Planning Area within the City of Columbia

ORIGINAL
STAMPED IN RED

WHEREAS, the City of Columbia and community at large recognize the value of planning for future development and growth; and,

WHEREAS, City Council approved Ordinance No.: 2008-085 on October 1, 2008 adopting the City of Columbia Comprehensive Plan 2018 in accordance with the South Carolina Comprehensive Planning Act of 1994 (Title 6, Chapter 29 of the SC Code); and,

WHEREAS, City Council approved Ordinance No.: 2015-014 on February 17, 2015 amending the City of Columbia Comprehensive Plan 2018 deleting the "Existing and Future Land Use Components of the Physical Area Development Element of The Columbia Plan: 2018" and replaced it with "Plan Columbia Land Use Plan Putting the Pieces Together," along with all the maps and policies contained therein; and,

WHEREAS, the properties located within the Capital City Mill District planning area were included within The Plan Columbia Land Use Plan Putting the Pieces in Place adopted by City Council on February 17, 2015, and the properties are currently classified as Urban Core Mixed Residential – Type 1 (UCMR-1), Urban Core Mixed Residential – Type 2 (UCMR-2), Urban Core Neighborhood Activity Center (UCAC-1), Urban Core Community Activity Center (UCAC-2), Urban Core Regional Activity Center (UCAC-3), Community Activity Corridor (AC-2), Employment Campus (EC), Sports/Amusement District (SD-1), Universities/Colleges (SD-2), and as shown on the attached map of existing future land use; and,

WHEREAS, the City of Columbia Planning Commission has reviewed a recommendation by staff that the properties be assigned the future land use classifications of Urban Core Mixed Residential – Type 3 (UCMR-3), Urban Core Neighborhood Activity Center (UCAC-1), Community Activity Corridor (AC-2) and Employment Campus (EC) as recommended by the Capital City Mill District Area and Corridor Plan and as shown in the attached proposed future land use map; and,

WHEREAS, the future land use classifications recommended by the Capital City Mill District Area and Corridor Plan were developed through a process of public engagement and are more appropriate as they reflect the vision for the Capital City Mill District planning area, and the Future Land Use Map shall be amended accordingly; and,

WHEREAS, the City of Columbia Planning Commission has provided input and recommendations in response to the public input and findings NOW, THEREFORE,

BE IT ORDAINED by the Mayor and City Council of the City of Columbia this 5th day of December, 2017, that the designated land use for the properties located within the Capital City Mill District planning area were identified as a mixture of Urban Core Mixed Residential – Type 1 (UCMR-1), Urban Core Mixed Residential – Type 2 (UCMR-2), Urban Core Neighborhood Activity Center (UCAC-1), Urban Core Community Activity Center (UCAC-2), Urban Core Regional Activity Center (UCAC-3), Community Activity Corridor (AC-2), Employment Campus (EC), Sports/Amusement District

ORIGINAL
STAMPED IN RED

(SD-1), Universities/Colleges (SD-2) in Plan Columbia Land Use Plan Putting the Pieces Together adopted by Ordinance No.: 2015-014 on February 17, 2015. This property is apportioned to City Council Districts 2 and 3, Census Tracts 27, 28, and 117.01, contains 333 acres, and the land use classifications shall be amended to include a mixture of Urban Core Mixed Residential – Type 3 (UCMR-3), Urban Core Neighborhood Activity Center (UCAC-1), Community Activity Corridor (AC-2) and Employment Campus (EC) as recommended by the Capital City Mill District Area and Corridor Plan and as shown in the attached proposed future land use map.

Requested by:

Assistant City Manager Gentry _____



Mayor

Approved by:



City Manager

Approved as to form:



City Attorney

ATTEST:

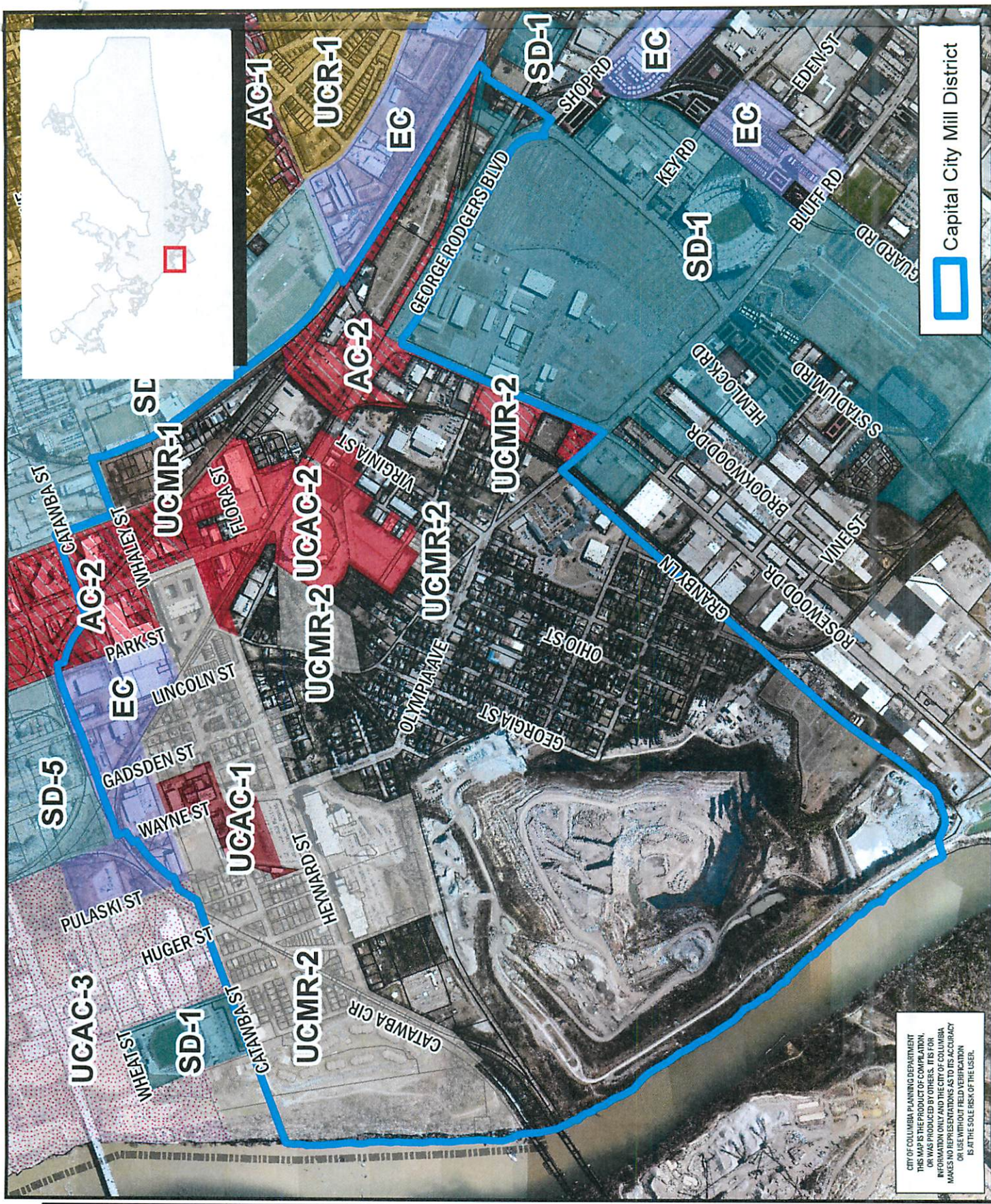

City Clerk

Introduced: 11/21/2017
Final Reading: 12/5/2017

Future Land Use Map

Department of Planning & Development Services

Capital City Mill District;
Existing City of Columbia FLU: Assorted



Legend

CITY LIMITS
 CITY LIMITS
 PARCELS

	UCMR-1 - Urban Core Mixed Residential-1
	UCMR-2 - Urban Core Mixed Residential-2
	UEMR - Urban Edge Mixed Residential
	UEMF - Urban Edge Multi-Family
	UCR-1 - Urban Core Residential Small Lot
	UCR-2 - Urban Core Residential Large Lot
	UER-1 - Urban Edge Residential Small Lot
	UER-2 - Urban Edge Residential Large Lot
	UCAC-1 - Urban Core Neighborhood Activity Center
	UCAC-2 - Urban Core Community Activity Center
	UCAC-3 - Urban Core Regional Activity Center
	UEAC-1 - Urban Edge Community Activity Center
	UEAC-2 - Urban Edge Regional Activity Center
	AC-1 - Neighborhood Activity Center
	AC-2 - Community Activity Center
	AC-3 - Regional Activity Center
	EC - Employment Campus
	ND - Neorectal
	TU - Transportation & Utilities
	SD-1 - Sports/Amusement District
	SD-2 - Civic/Institutional Districts
	SD-3 - Central Business District
	SD-4 - Riverbanks Zoo and Garden
	SD-5 - Universities/Colleges
	SD-6 - Fort Jackson

0 250 500 1,000 Feet

ORIGINAL PREPARATION/DATE:
 Leigh DeForth
 September 18, 2017



We Are Columbia

CITY OF COLUMBIA PLANNING DEPARTMENT
 THIS MAP IS THE PROPERTY OF THE CITY OF COLUMBIA
 OR WAS PRODUCED BY OTHERS. IT IS FOR
 INFORMATION ONLY AND THE CITY OF COLUMBIA
 MAKES NO REPRESENTATIONS AS TO ITS ACCURACY
 OR USE WITHOUT FIELD VERIFICATION
 IS AT THE SOLE RISK OF THE USER.

Capital City Mill District

Future Land Use Map

Department of Planning & Development Services


Legend

CITY LIMITS
 PARCELS

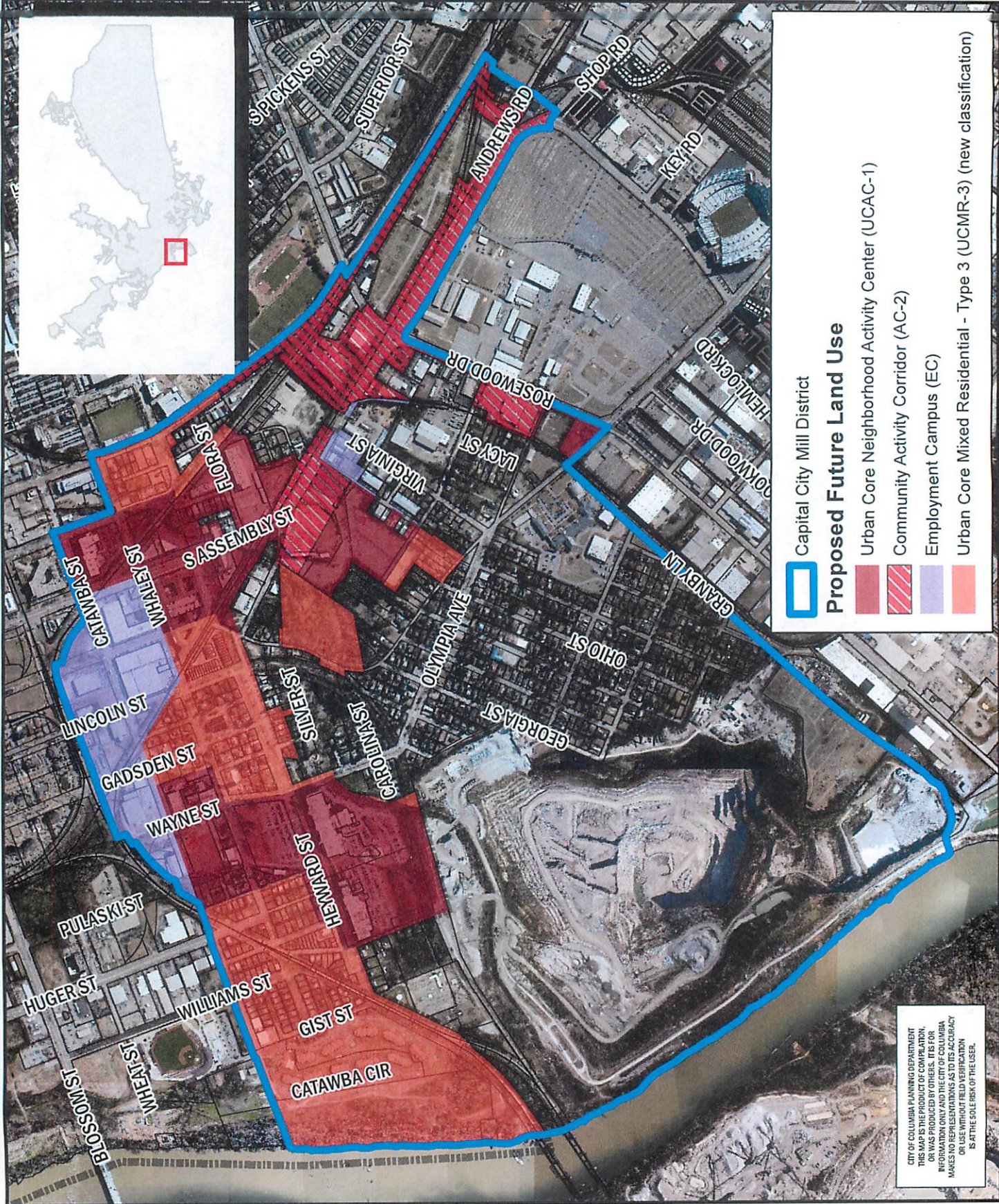
	UCMR-1 - Urban Core Mixed Residential-1
	UCMR-2 - Urban Core Mixed Residential-2
	UEMR - Urban Edge Mixed Residential
	UEMF - Urban Edge Multi-Family
	UCR-1 - Urban Core Residential Small Lot
	UCR-2 - Urban Core Residential Large Lot
	UER-1 - Urban Edge Residential Small Lot
	UER-2 - Urban Edge Residential Large Lot
	UCAC-1 - Urban Core Neighborhood Activity Center
	UCAC-2 - Urban Core Community Activity Center
	UCAC-3 - Urban Edge Community Activity Center
	UCAC-4 - Urban Edge Regional Activity Center
	UCAC-5 - Urban Edge Regional Activity Center
	AC-1 - Neighborhood Activity Center
	AC-2 - Community Activity Center
	AC-3 - Regional Activity Center
	EC - Employment Campus
	IND - Industrial
	TU - Transportation & Utilities
	SD-1 - Sports/Amusement District
	SD-2 - Civic/Institutional Districts
	SD-3 - Central Business District
	SD-4 - Riverbanks Zoo and Garden
	SD-5 - Universities/Colleges
	SD-6 - Fort Jackson

0 250 500 1 000 Feet

ORIGINAL PREPARATION/DATE:
This map was prepared by:
Leigh DeForth
September 27, 2017



We Are Columbia



Proposed Future Land Use

- Capital City Mill District
- Urban Core Neighborhood Activity Center (UCAC-1)
- Community Activity Corridor (AC-2)
- Employment Campus (EC)
- Urban Core Mixed Residential - Type 3 (UCMR-3) (new classification)

CITY OF COLUMBIA PLANNING DEPARTMENT
THIS MAP AND THE INFORMATION CONTAINED
HEREIN WAS PROVIDED BY OTHER SOURCES FOR
INFORMATION ONLY AND THE CITY OF COLUMBIA
MAKES NO REPRESENTATIONS AS TO ITS ACCURACY
OR USE WITHOUT FIELD VERIFICATION
IS AT THE SOLE RISK OF THE USER.